

Community Advisory Group

Meeting #21 – 24 August 2023

We acknowledge the Gunaikurnai people as the traditional custodians of the land and pay respect to their elders past and present.

Agenda

1. Welcome
2. Standing items and actions
 - Apologies
 - Minutes and action items
 - Declaration of potential conflicts
3. What's happening on the project
4. What's happening in the community
 - All (15 min)
5. Break (10 min)
6. Focus Topic: Offshore Wind Supplier Showcase
7. Focus Topic: Ports Assessment
8. Other business
 - Other questions or feedback
 - Suggestions for future agenda items
 - Next meeting – Yarram, Thursday 5 October.
9. Meeting close

What's been happening

- **Events:**
 - Sale Catholic College – Pathways Expo,
 - BBLLLEN – Job Skills Expo,
 - Warrigunya – Information session and BBQ,
 - Federation University Australia's Open Day,
 - Gippsland Tech School – Science Week
- **Presentations:**
 - 3rd Australian Offshore Wind Conference,
 - SEC Energy Jobs and Skills Forum,
 - Australian Clean Energy Summit,
 - Gippsland Tech School – Teacher presentation,
 - Yarram Secondary College – Broadening Horizons,
 - Australian Wind Energy 2023,
 - Institute of Surveyors Victoria – Surveying Expo,
 - Yarram 1st Scouts Victoria,
 - Rotary Club of Mont Albert & Surrey Hills
- **'Making the move to offshore wind'** launched at the SEC Energy Jobs and Skills Forum, highlighting how workers' current skills and experience match with offshore wind roles
- Paul visited the Rampion Wind Farm in southern England



What's coming up

- **Launching our** Offshore Wind Supplier Showcase
- **Events and presentations:**
 - Manns Beach Improvement Committee
 - Gippy Youth New Energy Jobs Summit
 - Gippsland New Energy Conference 2023
 - Gippsland eV Expo and Community Day – Port of Sale
 - ISCA CONNECT Leadership Breakfast
 - ER Law Annual Conference 2023
 - Gippsland Regional Executive Forum



What's happening in the community

- **Community updates**

- Wendy Farmer
- Julianne Peavey

- **Everyone**

- What are you hearing?
- What are the hot topics in your local area?

Would you like to give an update at the next meeting?



Share what's happening in your community



Focus topic: Offshore Wind Supplier Showcase

Offshore Wind Supplier Showcase



- Highlights local supply opportunities
- Gives global offshore wind supply chain a glimpse of what local businesses have to offer

Offshore wind supply opportunities

| | | Capability | | |
|-----------------------------------|--|------------|----------|-----|
| | | Existing | Leverage | New |
| Development | Environment and planning services | ✓ | | |
| | Engineering design services | ✓ | | |
| | Energy and grid services | ✓ | | |
| | Surveys | ✓ | | |
| | Floating LiDAR services | ✓ | | |
| Offshore wind turbines | Nacelle | | | ✓ |
| | Blades | | | ✓ |
| | Tower – steel plate (no joins) | | | ✓ |
| | Tower – fabrication >10 metres diameter | | | ✓ |
| | Tower – platforms, ladders, rails | | ✓ | |
| Offshore wind turbine foundations | Transition piece – steel plate (no joins) | | | ✓ |
| | Transition piece – fabrication | | | ✓ |
| | Transition piece – platforms, ladders, rails, boat landing | | ✓ | |

Aboriginal businesses

First Nations Traffic Management

First Nations Traffic Management was engaged by the VicConnect Consortium to provide traffic management services for the Victorian Government's Gippsland Line Upgrade project.

First Nations Traffic Management partnered with GLaWAC to identify and provide employment for local members of the community on the project.



Photo courtesy of First Nations Traffic Management)

| Supplier | First Nations Traffic Management |
|---------------------|---|
| Location | Nunawading, Victoria |
| Website | www.fntm.com.au / www.fnlh.com.au |
| Categories | Traffic management, Labour hire |
| Contract capacity | \$10,000,000 to \$20,000,000 |
| Overview | First Nations Traffic Management is an Aboriginal-owned company employing 300 staff, of which 70 employees are Aboriginal or Torres Strait Islander. Its motto is <i>Changing Lives Through Employment</i> . In addition to supplying major projects with First Nations labour, First Nations Traffic Management purchases PPE and other goods and services from Aboriginal and Torres Strait Islander suppliers and social enterprises. |
| Key clients | VicConnect Alliance (Decmil, UGL, Arup) |
| Relevant experience | First Nations Traffic Management has supported the VicConnect Alliance, providing the Victorian Government's Gippsland Line Upgrade project with traffic management and labour services. It worked closely with Latrobe City Council's Indigenous Employment program to source local |

- Gunaikurnai businesses and partners
- Other Victorian Aboriginal businesses



ABORIGINAL BUSINESSES

Other Victorian Aboriginal businesses

The Kinaway Chamber of Commerce is the leading Victorian organisation dedicated to supporting Victorian Aboriginal and Torres Strait Islander business owners.



Kinaway is focussed on changing Aboriginal and Torres Strait Islander people's lives through a strength-based model of business ownership and participation in the Victorian economy.

Kinaway works closely with businesses by providing:

- Support
- Networking
- Advocacy
- Partnerships.

These services provide an essential framework to promote and support the ongoing operation of Aboriginal and Torres Strait Islander businesses.

| Supplier | Native Oz Group |
|---------------------|--|
| Location | Somerville, VIC |
| Website | www.nativeozgroup.com.au |
| Categories | Civil works, electrical, plumbing, labour hire, traffic management |
| Contract capacity | \$1,000,000 to \$2,000,000 |
| Overview | Native Oz Group is an Australian Indigenous-owned company providing quality services, including: <ul style="list-style-type: none"> • Civil construction • Drilling • Telecommunication pits and pipes • Service relocation • Roadworks • General maintenance • Electrical services • Cleaning services. |
| Key clients | Acciona, Laing O'Rourke |
| Relevant experience | NativeOz Group has supported several Victorian Government projects, including the Mont Albert Level Crossing Removal. The work delivered included asset location services, non-destructive digging, and electrical spotting. |

Gippsland businesses

| Supplier | TOP Welding & Construction |
|---------------------|--|
| Location | Morwell, VIC |
| Website | www.topwelding.com.au |
| Categories | Fabrication and welding of piping and structural steel components |
| Contract capacity | \$2,000,000 to \$10,000,000 |
| Overview | <p>TOP Welding & Construction (TOP) specialises in the fabrication and welding of piping and structural steel components, tanks/vessels in stainless steel and carbon steel.</p> <p>It can carry out weld procedures which are covered under ASMEB31.3, AS4041 and AS1554 Part 1, using various welding techniques and processes with TIG, MIG, STT, Flux Core and Sub Arc capabilities.</p> <p>TOP has a Quality Management System fully accredited to AS/NZS ISO 9001-2008 which provides 100% traceability of all materials and welding, together with vendor documentation.</p> <p>TOP also offers a full dimensional survey service on critical dimensional spooling to guarantee 100% fit-up in critical areas and shutdown periods.</p> |
| Key clients | Alinta Energy, Beach Energy, Exxon Mobil, Gasco, WOOD Group, Worley Parsons |
| Relevant experience | Over 45 years' experience with Exxon Mobil/Esso onshore and offshore, Bass Strait process plants at Long Island Point and Longford Gas Plant. |

Drakeford Studios

Established in 2018 in Yarram by locals Holly and Steph, Drakeford Studios provides graphic design and specialist printing services including:

- Wall stickers
- Small format printing
- Large-scale signage
- Metal signage
- Corflute signage
- Temporary stickers
- Car signage
- Logo stickers.

Drakeford Studios puts creative design at the forefront of everything they do and understand how to make a business stand out.

They have supplied Star of the South with office signage, small and large-scale printing, and workwear.

"This new offshore wind industry will be a great asset to Gippsland businesses, providing more jobs for our community and a cleaner future."



Photos courtesy of Drakeford Studios

Phone: 0477 716 568

Website: www.drakefordstudios.com.au

| Supplier | Boom Logistics |
|---------------------|---|
| Location | Morwell, VIC |
| Website | www.boomlogistics.com.au |
| Categories | Cranes |
| Contract capacity | \$50,000,000+ |
| Overview | <p>Boom Logistics has 14 crane depots nationally, including in Morwell, Gippsland. It has over 260 cranes ranging from five to 800 tonnes. The fleet includes mobile hydraulic cranes ranging from 15 to 800 tonnes and crawler/lattice cranes ranging from 50 to 750 tonnes, available for either wet hire, dry hire or contracted project delivery.</p> <p>Boom Logistics has a team of experienced crane operators, riggers and wind technicians; supported by qualified lift engineers and supervision. Through a strong capability in project execution and contracting model, it provides services-based solutions to markets including the energy, infrastructure, resources and industrial sectors.</p> <p>Boom Logistics also has a fleet of over 120 travel towers, access equipment, boom lifts and scissor lifts, available for either wet or dry hire.</p> |
| Key clients | Goldwind, GE, Acciona Energia, Siemens Gamesa, Vestas, Exxon Mobil, AGL, AusNet, Energy Australia, UGL, Downer, Opal Australian Paper |
| Relevant experience | <p>Reference Projects include:</p> <ul style="list-style-type: none"> • Onshore wind farm Wind Turbine Generators (WTG) construction and installation including Goldwind, Acciona Energia, GE and Vestas • Transmission line tower construction • Crane services for industrial construction projects including infrastructure, mine sites, manufacturers, and power stations • Crane services for major shut down maintenance on industrial and resource sites including Engie, AGL and Energy Australia, FMG and BHP • Team of technicians and trades have completed maintenance and service work on offshore oil and gas rigs in Gippsland • Industrial crane maintenance in Bass Straight, with ExxonMobil. |



Above L-R: Tony and deckhand Wayne from Far Out Charters; Belinda and owner Brian from Port Albert Fishin' Charters

Gippsland vessels

Local fishers can play a role during the development, construction and operations phases of an offshore wind project.

Local businesses could provide vessel services for marine survey campaigns and to maintain a safe work zone during construction. Businesses with the capability to support offshore wind are listed below.

| Company/Name | Vessel Location | Contact |
|-----------------------------------|---------------------------------|---|
| AB Hunter Fishing | Lakes Entrance | 0428 524 357 |
| Anastos Fishing | Port Welshpool | 0427 871 080 |
| Andrew Zapantis | Port Welshpool | 0429 866 509 |
| Atoll Offshore | Lakes Entrance | www.atolloffshore.com.au |
| Australian Oceanographic Services | Lakes Entrance | 0401 843 338 |
| Australian Wildcatch Fishing | Lakes Entrance | www.australianwildcatchfishing.com |
| Challenge Marine Services | Lakes Entrance | 0413 759 757 |
| Corner Inlet Barge | Port Franklin | 0437 662 352 |
| Far Out Charters | Lakes Entrance | 0428 401 819 / www.faroutcharters.com.au |
| Fishermen Direct | Port Welshpool | 0497 169 550 / grantleworthly@gmail.com |
| JK Marine Services | Port Franklin | 0448 403 176 / www.jkmarineservices.com.au |
| JM and G Barrett | Lakes Entrance | 0427 358 091 |
| Port Albert Fishin' Charters | Port Albert | 0409 793 714 |
| Pescari Industries | Lakes Entrance / San Remo | dredgewa@gmail.com / 0409 950 497 |
| Prom Coast Seafoods | Port Franklin | erna_leigh32@hotmail.com |
| Seapride Charters | Port Albert | gmconachy20@outlook.com |
| Strauss Wilderness Coast Charters | Mallacoota | wildcoastl@bigpond.com |
| The Local Catch | San Remo | 0422 444 806 |
| Trinsand Fisheries | Lakes Entrance / Port Welshpool | 0418 520 118 / admin@trinsand.com.au |
| Undersea Marine | Lakes Entrance | www.underseamarine.com |

Victorian businesses



Photo courtesy of Keppel Prince Engineering

| Supplier | Keppel Prince Engineering |
|---------------------|--|
| Location | Portland, VIC |
| Website | www.keppelprince.com.au |
| Categories | Steel fabrication, wind tower manufacturing, wind tower fit-out |
| Contract capacity | \$50,000,000+ |
| Overview | <p>Keppel Prince Engineering specialises in the construction, fabrication and maintenance of industrial structures and equipment.</p> <p>From wind farms to bridges, the team of 300 professionals has the experience and resources to deliver projects on brief, on time and on budget.</p> <p>Keppel Prince offer new solutions to build and maintain a sustainable future for customers, the environment and the community.</p> |
| Key clients | Acciona, Goldwind, Siemens, Alcoa, Telstra |
| Relevant experience | <p>Keppel Prince has worked on some of the largest onshore wind farms in Australia.</p> <p>Keppel Prince's world-class facility is designed to fabricate, blast and paint, fit-out and store onshore wind towers, without double-handling. It also supplies and installs complex internal components such as platforms, ladders, electrical cables, lights and fall arrest systems.</p> |

| Supplier | Wilson Transformers |
|---------------------|--|
| Location | Glen Waverley, VIC |
| Website | www.wtc.com.au |
| Categories | Electrical infrastructure |
| Contract capacity | \$50,000,000+ |
| Overview | <p>Wilson Transformers (WTC) is the largest Australian owned and based manufacturer of power and distribution transformers. WTC operates two Victorian manufacturing facilities in Glen Waverley and Wodonga.</p> <p>For more than 80 years, WTC has been designing and building transformer products and providing life-time management services. It is committed to supporting local and global customers by delivering reliable and high-quality products that meet customers' requirements. Its products range from 16kVA single-phase pole mount transformers and three-phase 100 kVA compact MV substations, right up to three-phase 550MVA 400kV transmission transformers.</p> <p>Through collaboration with international organisations combined with its ongoing focus on innovation, WTC has pioneered a range of alternative solutions that are commercially and technically attractive, for different sectors. Its ideas, experience and commitment to continuous improvement enable it to provide products that minimise the customer's whole-of-life cost and operational risks.</p> <p>Hundreds of thousands of WTC's transformers are in service around Australia and other parts of the world.</p> |
| Key clients | Ausnet, Goldwind, UGL, Acciona, Downer EDI |
| Relevant experience | <p>Wilson Transformers has provided products and services to a wide range of renewable energy projects, including:</p> <ul style="list-style-type: none">• Portland Windfarm• Waubra Windfarm• Ararat Windfarm• One Sun Capital Solar Farm. |

Australian businesses

| Supplier | Garde Services |
|---------------------|--|
| Location | Silverwater, NSW |
| Website | www.garde.com.au |
| Categories | Underground cable installation |
| Contract capacity | \$50,000,000+ |
| Overview | <p>Garde Services is Australia's leader in underground infrastructure services to the electricity industry, and a NSW Level 1 Accredited Service Provider (ASP).</p> <p>Garde Services is a specialist supplier to the electrical construction industry, focussed on civil construction, that supports the installation, maintenance and protection of high voltage underground electricity cables and assets. Garde has been responsible for the design, construction, and installation of transmission cables for numerous electricity authorities, including Ausgrid, TransGrid, and Endeavour Energy, over the past 40 years.</p> <p>Garde Services supports the installation, maintenance, and protection of high voltage underground electricity cables and assets.</p> <p>Various cable installation methodologies are utilised, including open trench excavations, ducted excavations, tunnels, submarine cables and underground tunnels and chambers. The scope of installations ranges from urban streets to rural areas and includes switch stations, substations and power stations.</p> |
| Key clients | TransGrid, Ausgrid, Endeavour Energy |
| Relevant experience | As part of the 330kV Powering Sydney's Future project, Garde was awarded the contract for the installation of 20km of 330kV underground transmission feeder cables from Transgrid's Rookwood Road Substation to Alexandria Substation. Garde were also heavily involved in the circuit design and |



Photo courtesy of Incat

| Supplier | Incat |
|---------------------|--|
| Location | Hobart, TAS |
| Website | www.incat.com.au |
| Categories | Boat builder, Crew Transfer Vessels, Service Operation Vessels |
| Contract capacity | \$50,000,000+ |
| Overview | <p>With a workforce of over 400, Incat is a builder of large (100+ metre) and small (24 metre) ropax/pax only ferries and offshore support vessels.</p> <p>Incat has been in continuous operation for 50 years. It has 77,000m² of covered construction halls, two covered drydocks, two slipways and over 180m of wharf space.</p> |
| Key clients | <ul style="list-style-type: none">• Port Authority of Trinidad and Tobago• Transport for NSW• Armas• Molslinein• Caspian Marine Services• Buquebus• Virtu Ferries. |
| Relevant experience | <p>Incat is a world leader in design and construction of lightweight aluminium transport solutions and is currently building the world's largest zero emission ferry.</p> <p>It has delivered over 80 vessels, including 52 vessels in excess of 70 metres length overall (LOA).</p> |

Australian businesses



AUSTRALIAN BUSINESSES

Thank you to all suppliers registered on the ICN Gateway

| | | | | |
|---|---------------------------------------|---|------------------------------------|---------------------------------|
| 1300 4 Flit | ARC Helicopters | Blastone International (Australia) | CNC Project Management | Eae Group Australia |
| 29 On Wharf | Arcelormittl Projects Australia | Bloore & Piller | Cnood Australia | Eagle Eye Innovations Australia |
| 2H Offshore Engineering | Arcflash Electrical Consultants | BLTR Integrity | Coastal Steelfixing Australia | Ealwin Operations |
| 360Protect | Ares Project Services | Blue Ocean Marine Services | Comacon | Eastern Generator Hire |
| 3B Survey | Armorgalv (Australia) | Blue Planet Marine | Commтел Network Solutions | Eastern Power Services |
| 3D Concrete And Construction | Arrow Electronics Australia | Blue Water Shipping | Compressed Air Australia | Eaton Electrical (Australia) |
| 3D Engineering Global | Arrow Pipes & Fittings Fzco | Blue Whale Steel | Concept Fibres | Eclipse Aeronautical |
| A. Noble & Son | Asia Pacific Steel | Bluecoast Consulting Engineers | Consolidated Plant Services | Ecology And Heritage Partners |
| A.C. Hargreaves | Asiaworld Shipping Services | Bluemont | Construction Time Lapse | ECS Project Logistics |
| A.M.C. Search Limited | ASP Ship Management | Bluescope Distribution | Contract Resources | Edcorp Project Solutions |
| A2B Trailers | Assembled Threads | Bluezone Group | COOE | EDG Australia |
| AAM | Atlas Copco Australia | BMC HV Electrical & Instrumentation | Coopers Timber & Hardware | Edward James Landwehr |
| Abbott Risk Consulting | Atlas Engineering Australia | BMC Welding & Construction | Core Contracting Group | Eftech International |
| Abco Security Services | Atlas Programmed Marine | BMT Commercial Australia | Corefleet | Egis Oceania |
| Aberlay Transport | Atos (Australia) | Boat Harbour Jetty B&B | Corestaff Vic | Eifer'S Group |
| Abratech | ATS Enterprises | Bollore Logistics Australia | Coreworx Group | Eilbeck Cranes |
| Accelerated Concrete Sawing | Attention To Detail Painting Services | Boltco | Cortexia | Electric Motor Power |
| Accent Environmental | Atteris | Boom Logistics | Cozalive Media | Electro 80 |
| Access Safety Services | Aurecon Australasia | Boskalis Australia | CPB Contractors | Empire Cranes |
| Ace Aquatec | Aus Instrelec | Bouygues Construction Australia | CQMS Castings | Employment Group |
| Acmena | Aus Iron Industries Vic | Brady's Truck & Automotive | Craig Terrance Hooper | Eneraque |
| ACR Complete Hire | Aus Wide Chauffeur Services | Brenniston First Aid And Workplace Safety | Cranes Asphaltng & Bitumen Sealing | Energy Group Consult |
| Adapt Australia | Ausco Modular | Brooks Hire Service | CRE Civil Group | Energy Power Systems Australia |
| Adra Group | AUSREO | BT Transport & Logistics | CRINNAC | Enermech |
| Advanced Composite Structures Australia | Austfluid Link Asia Pacific | Build Enviro Consulting Group | Cromarty | Engage Marine |
| Advanced Cranes & Rigging Australia | Australian Electrical Industries | Bullivants | Crowley Australia | Enpower Australia |
| Advanced Technology Products | Australian Maritime Systems Limited | Bunbara | CSA Specialised Services | Envirogain |
| Aerologix | Australian Offshore Solutions | Bunji Hire | CSE Crosscom | Environmental Projects |
| Afl Telecommunications Australia | Australian UAV | Bunzl Brands & Operations | CSE-Uniserve | Enviropacific Services Limited |
| Aggreko | Ausworkwear & Safety | C.J.A. Lee & Associates | Customs Agency Services | EPI Group Australia |
| AJP Consult | Auxilium One | | Cyberloop Australia | Epic Environmental |
| Aker Solutions | Axess Offshore Australia | | CYLAD Australia | Epsilon Instrumentation |
| | Azure Integrity | | Daly'S Constructions (Australia) | ERGT Australia |
| | | | | Erntec (Victoria) |

Focus topic: Ports Assessment

Construction Ports

Multiple ports are expected to be needed during construction.

Key requirements

- Up to 25 ha available land for turbines
- Up to 7.5 ha available land for foundations
- 12 m water depth
- Dedicated berth

We would use construction ports during Star of the South's construction phase, and from time-to-time during operations to support major maintenance activities, if required.



Veja Mate

Gippsland Operations Base

16

Day-to-day construction management, operations and maintenance activities.

Key requirements

- Up to 1.5 ha available land for warehousing, and office, staff facilities and parking.
- 6 m water depth
- Dedicated berths for crew transfer or service operations vessels

Operates throughout construction, operations and decommissioning.

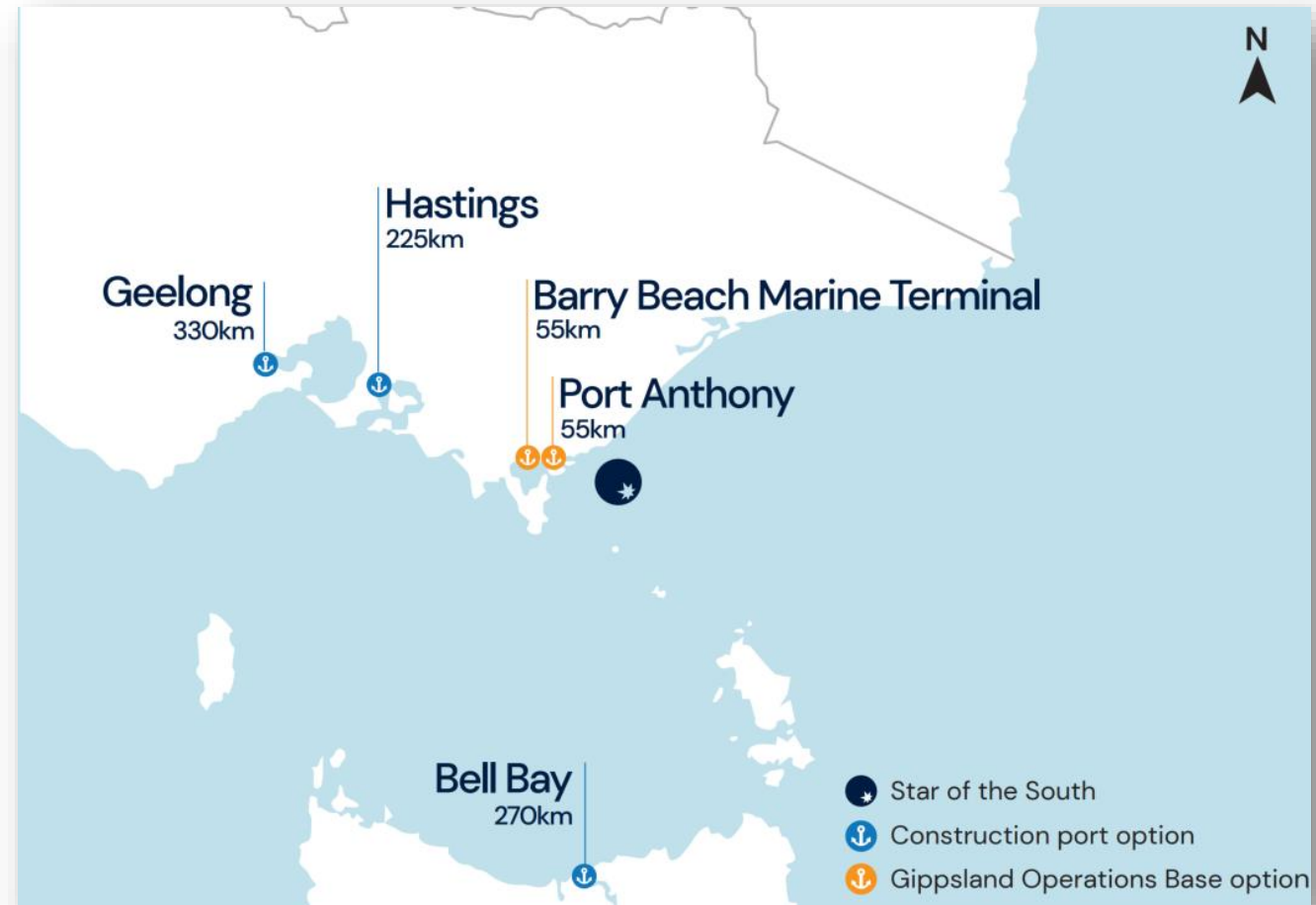


Shortlisted port options

The Victorian Renewable Energy Terminal proposed at the **Port of Hastings** is our preferred primary construction port.

The **Geelong Port** and **Port of Bell Bay** are good secondary construction port options. Both are existing deep-water ports with suitable facilities and available land.

Barry Beach Marine Terminal and **Port Anthony** are good options for the long-term Gippsland Operations Base. These already established commercial ports are close to the proposed wind farm site.



Preferred Primary Construction Port

PORT OF HASTINGS

- Victorian Renewable Energy Terminal (VRET)
- Ideal location
- Dedicated berth
- Bespoke offshore wind layout proposed ensures adequate storage space
- Well suited to service turbine components



Secondary Construction Port

GEELONG PORT

- Potential option in multi-port solution for secondary, contingency or overflow of components
- Up to 20.7 ha of freehold land could be made ready in time



Secondary Construction Port

PORT OF BELL BAY

- Existing Berth
- 'Ready to go' facilities, minimal improvements needed
- Limited storage space for turbine components
- Sufficient laydown for foundation components
- Full services readily available
- Accessible and navigable



Gippsland Operations Base



BARRY BEACH MARINE TERMINAL OR PORT ANTHONY

- Close proximity to project
- Proposed multi-user facility for offshore wind
- Local employment and industry opportunities
- Harnesses oil and gas experience
- Shallow waters within Corner Inlet

Other business

Other business

- CAG End of year Break-up
- Other questions and feedback?
- Suggestions for future agenda items?
 - List on the CAG Member Teams Page 'files'
 - Email/call Jason
- Next meeting – 5 October 2023

Forward meeting schedule

| Date | Location | Topic (tentative, subject to change) |
|----------------|--------------------------|--|
| 5 October | Yarram | Marine environmental assessment update (including birds, marine mammals, seafloor ecology) |
| 15 November | Foster / South Gippsland | Potential for a Barry Beach site visit. |
| December (TBC) | TBC | Xmas breakup |

Thank you for your participation