

Star of the South

Newsletter 1 | August 2019



We're social!

Got Facebook and keen to stay across our latest updates?

Follow us and like our Facebook page at **Star of the South Project** to hear our news and chat to us online.

Upcoming sessions

September 2019

Community consultation sessions:

- Morwell
- Lakes Entrance
- Yarram
- Woodside
- Leongatha
- Port Franklin

Introducing Australia's first proposed offshore wind farm

Site investigations are starting on Australia's first offshore wind farm – the Star of the South – and we invite you to get involved.

The Star of the South has the potential to power hundreds of thousands of Victorian homes, meeting a substantial part of the State's electricity needs. If the project proceeds to construction and operation, it could create thousands of jobs and significant investment in Gippsland and the Latrobe Valley.

It's still early days, but we're keen to hear from you. We invite you to come and learn more about the Star of the South and share your views at our upcoming community consultation sessions.

See the back page of this newsletter for details of our sessions or go to starofthesouth.com.au/getinvolved to connect with us online.

What's involved?

The Star of the South project involves:

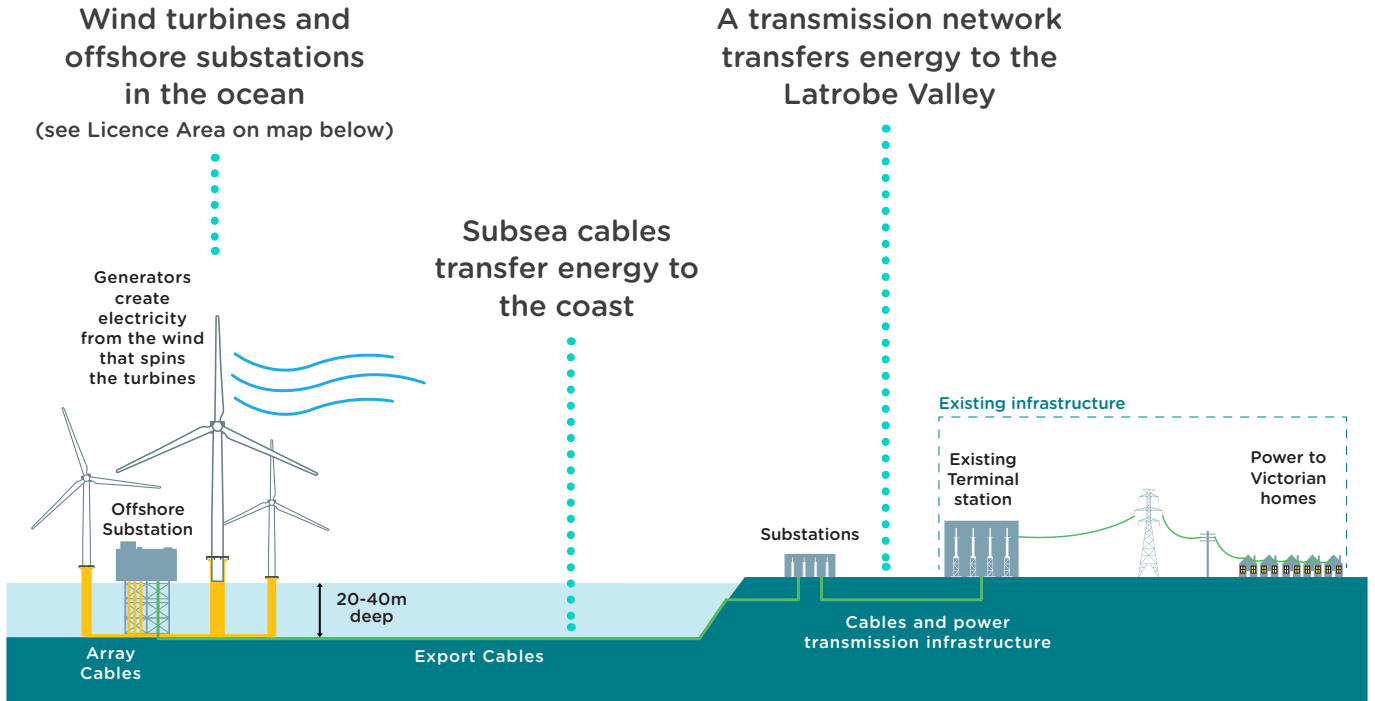
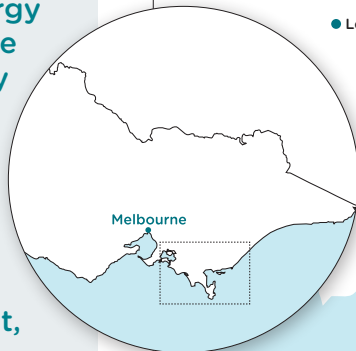


Diagram not to scale

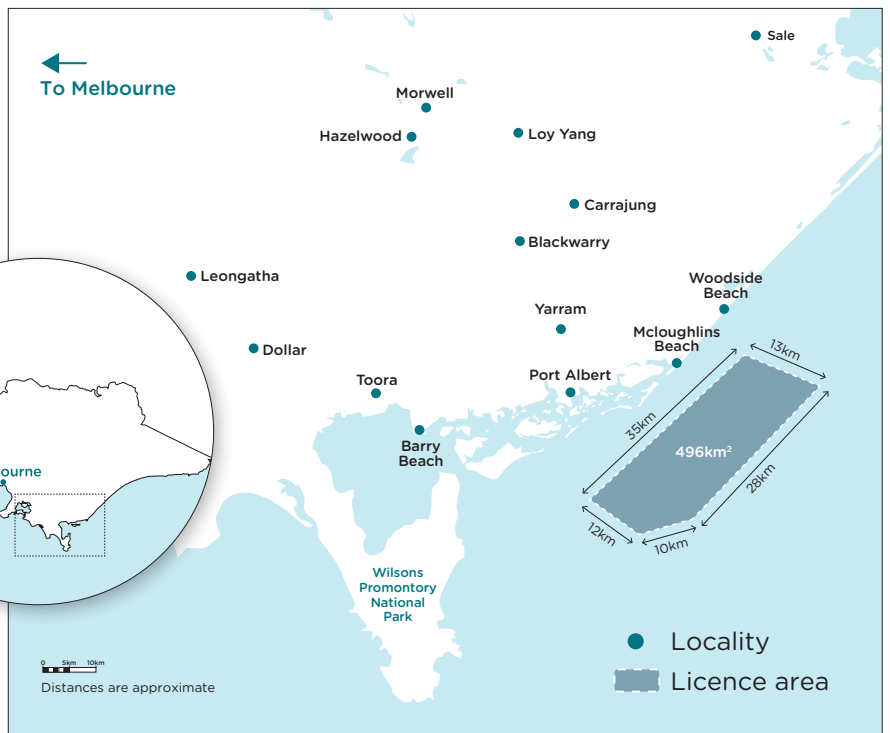
In addition, upgrades to ports to allow for construction and operation may be required.



We're excited to be talking about offshore wind in Australia, which is globally recognised as a large-scale contributor to the energy mix in countries like the UK, Denmark, Germany and France. Offshore wind is also taking off in the US and across Asia. It's a proven and clean technology and a strong driver for economic development, creating jobs during construction and operation.



Map of our Licence Area



Understanding local conditions

Currently we are investigating the project, with site studies into the local wind, seabed and environment to help confirm if the project can go ahead.

Based on our observations to date, the south coast of Gippsland ticks a number of boxes for offshore wind due to strong and consistent winds, relatively low water depths, access to ports and plenty of capacity in the existing electrical transmission network.

Our detailed studies and site investigations are planned to start from late 2019 and include:



Measuring wind and wave conditions



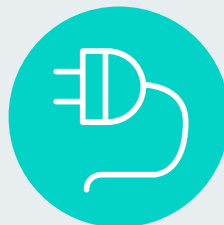
Studies to understand more about the seabed conditions



Marine mammal, bird and other environmental studies



Community and stakeholder consultation to understand local perspectives



Transmission, grid and engineering studies



Economic studies, including identifying opportunities for local industry

Throughout the site investigations, we will work closely with all levels of government and Traditional Owners on the potential to develop the Star of the South project into the future.

For more information, see our investigations fact sheet online at starofthesouth.com.au/getinvolved.

Measuring the wind

One of the most important investigations in developing offshore wind projects is collecting data about wind speed and directions.

Floating detection and measurement devices, called floating LiDARs, are routinely used around the world in offshore wind project developments. They are like large buoys, fitted with detection and measuring equipment.

Our floating LiDARs will be placed out at sea to collect important data about wind conditions, over a period of up to two years. We will also deploy a wave buoy to collect wave data. We will consult with fishers and marine users to ensure the floating LiDARs and buoys are placed in a safe location within our licenced area.



Investigating the seabed

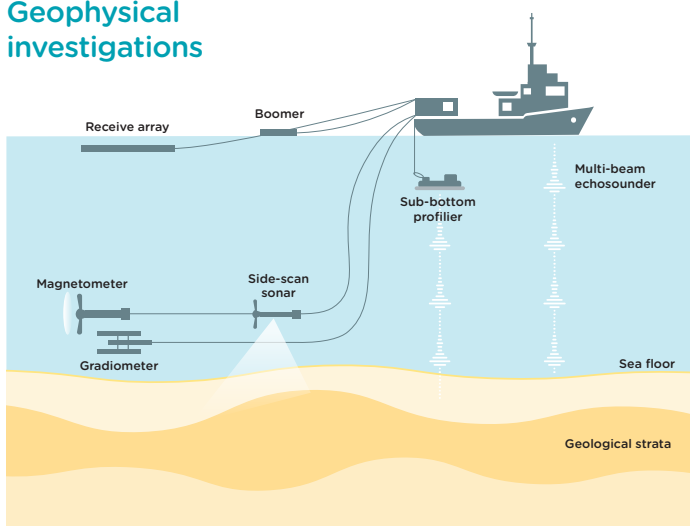
Geophysical survey soundwave equipment is used to collect data on the seabed and local site conditions up to 80 metres below the seabed.

The equipment lets out a ping as it travels down through the water until it hits sediment, gathering information about underwater topography and collecting information to understand the seabed features (such as unmarked ship wrecks and buried cables and pipelines) and of the sub-seabed. The investigations are likely to be conducted using a locally based vessel.

Following these initial soundwave studies, geotechnical surveys will help us better understand what's happening under the seabed. This is done by taking shallow core samples of the seabed sediment and studying it to understand its composition and strength to establish geological conditions. The investigations are performed using a medium sized vessel.

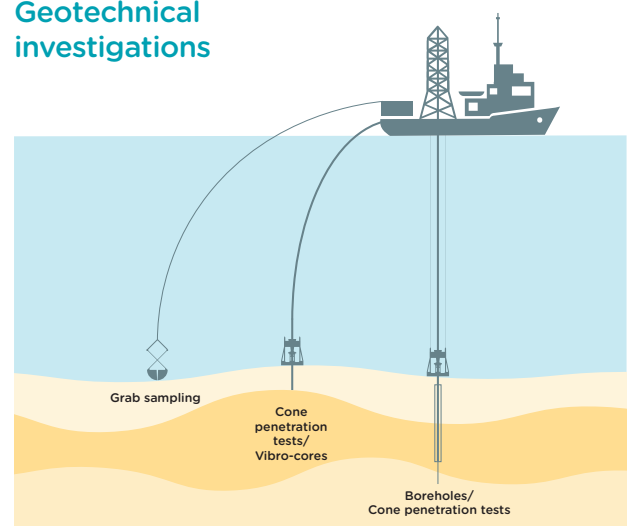
We will talk with fishers and marine users on the timing and location of these activities, which will occur over two stages.

Geophysical investigations



Diagrams not to scale

Geotechnical investigations



Understanding the marine environment

Surveys are undertaken to investigate the marine environment including fish, whales and seals and migrating birds in and around the project area.

We're planning to undertake sound monitoring using marine hydrophones from late 2019 to help collect important data about the patterns of marine animals. Proposals for further investigations to understand seabirds and migratory shorebirds, which could include aerial surveys, are being planned. These studies are taken into account when designing and operating an offshore wind farm.

Meet the team

We're a professional team of Australians and Europeans who are investigating the potential for Australia's first proposed offshore wind farm.

Members of our team have worked in the Australian energy and global offshore wind industries for many years across planning, environmental, technical, community and commercial roles. The Star of the South is comprised of Australian founders and Copenhagen Infrastructure Partners (CIP) – a world leader in offshore wind development.



What does the Star of the South mean for Gippsland?

We recognise the important role Gippsland and the Latrobe Valley play in using Australia's natural resources to power the State of Victoria. The Star of the South offers a unique opportunity to continue this tradition.

We will be looking at what the Star of the South could mean for local jobs, investment and industry, particularly in manufacturing during construction and ongoing local jobs during operations.

We also recognise the project could mean physical changes for the local area. Our ongoing studies will help us understand these changes in more detail, as well as any effects on the local community and environment.

We will share more information as our site investigations progress – please get in touch with us if you have any feedback at this early stage.





Come along and learn more

We're holding some community consultation sessions and would love to hear from you at this early stage of the project. Feel free to drop in at any stage or come to hear a brief presentation at the start of each session at the times and locations outlined below.

Town	Date	Time	Location
Morwell	Thursday 12 September 2019	5.30pm to 7.30pm	Italian/Australian Club, Main Auditorium 499-501 Princes Drive, Morwell
Lakes Entrance	Friday 13 September 2019	5.00pm to 6.30pm	The Central Hotel (Pub) 321 Esplanade, Lakes Entrance
Yarram	Monday 16 September 2019	5.30pm to 7.30pm	Yarram Secondary College 86 James St, Yarram
Woodside	Tuesday 17 September 2019	5.30pm to 7.30pm	Woodside Community Hall Cnr Prince Street and Austins Road, Woodside
Leongatha	Saturday 21 September 2019	10.00am to 12.00pm	Leongatha Memorial Hall, Room 1 6-8 McCartin Street, Leongatha
Port Franklin	Saturday 21 September 2019	2.00pm to 4.00pm	Port Franklin Community Hall Tramway Street, Port Franklin

We look forward to meeting you at our upcoming sessions in Gippsland. Can't make it? Feel free to contact us with any questions or input at starofthesouth.com.au/getinvolved, info@starofthesouth.com.au or 9108 4000.



Working with local communities

Community feedback is essential to planning, developing and potentially delivering a world-class offshore wind project.

There will be plenty of opportunities for you to share your views on the project, as planning and site investigations progress.

Feedback collected during this stage of the project will help inform:

- Our approach to site investigations including identifying options for avoiding, mitigating or minimising impacts
- Local supply benefits and opportunities as part of the development phase and building relationships for future phases

- Approach to future consultation methods and tools
- Issues and opportunities relating to a potential wind farm off the south coast of Gippsland.

Get in touch with us if you would like to discuss an idea or opportunity at info@starofthesouth.com.au or 9108 4000.



starofthesouth.com.au

More information

To find out more about the Star of the South project and register for future updates:

 starofthesouth.com.au

 9108 4000

 info@starofthesouth.com.au

 Star of the South

 Star of the South Project



Interpreter service: 13 14 50

