



# Star of the South

Community Advisory Group — Meeting #2

3 December 2020



StaroftheSouth

# 1. Welcome

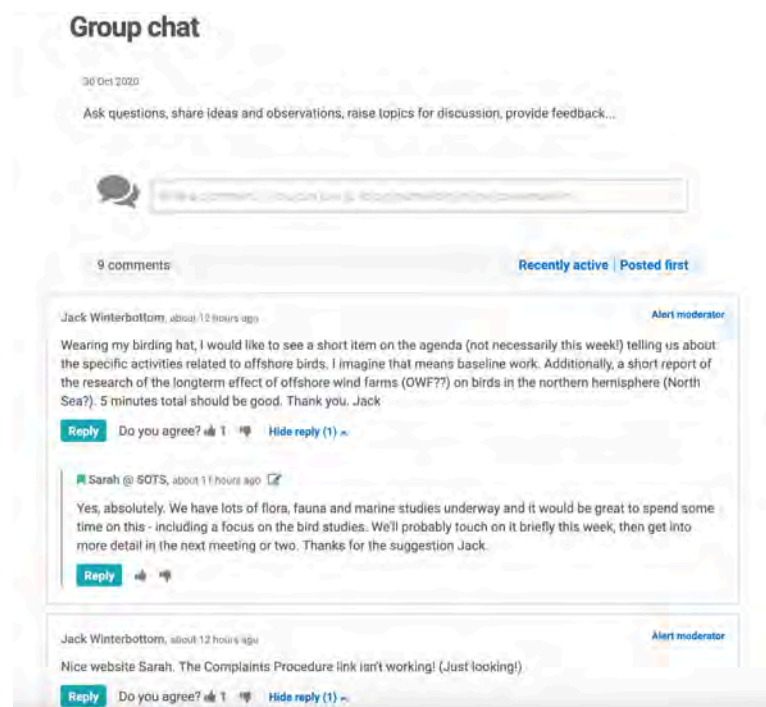
We acknowledge the Traditional Owners of the lands on which we all meet today and pay our respect to their elders past, present and future.

In particular, we recognise the Gunaikurnai people as Traditional Owners of the area in which the Star of the South would be located.

## 2. Actions from previous meeting

# Communication between meetings

- <https://getinvolved.starofthesouth.com.au/cagmember/>
- Closed page – members only, user name and password required
- Let us know if this is useful / working / ideas to improve



**Group chat**

30 Oct 2020

Ask questions, share ideas and observations, raise topics for discussion, provide feedback...

9 comments Recently active Posted first

Jack Winterbottom, about 12 hours ago Alert moderator

Wearing my birding hat, I would like to see a short item on the agenda (not necessarily this week!) telling us about the specific activities related to offshore birds. I imagine that means baseline work. Additionally, a short report of the research of the longterm effect of offshore wind farms (OWF??) on birds in the northern hemisphere (North Sea?). 5 minutes total should be good. Thank you. Jack

Reply Do you agree? 👍 1 🗨️ Hide reply (1) ▶

Sarah @ SOTS, about 11 hours ago

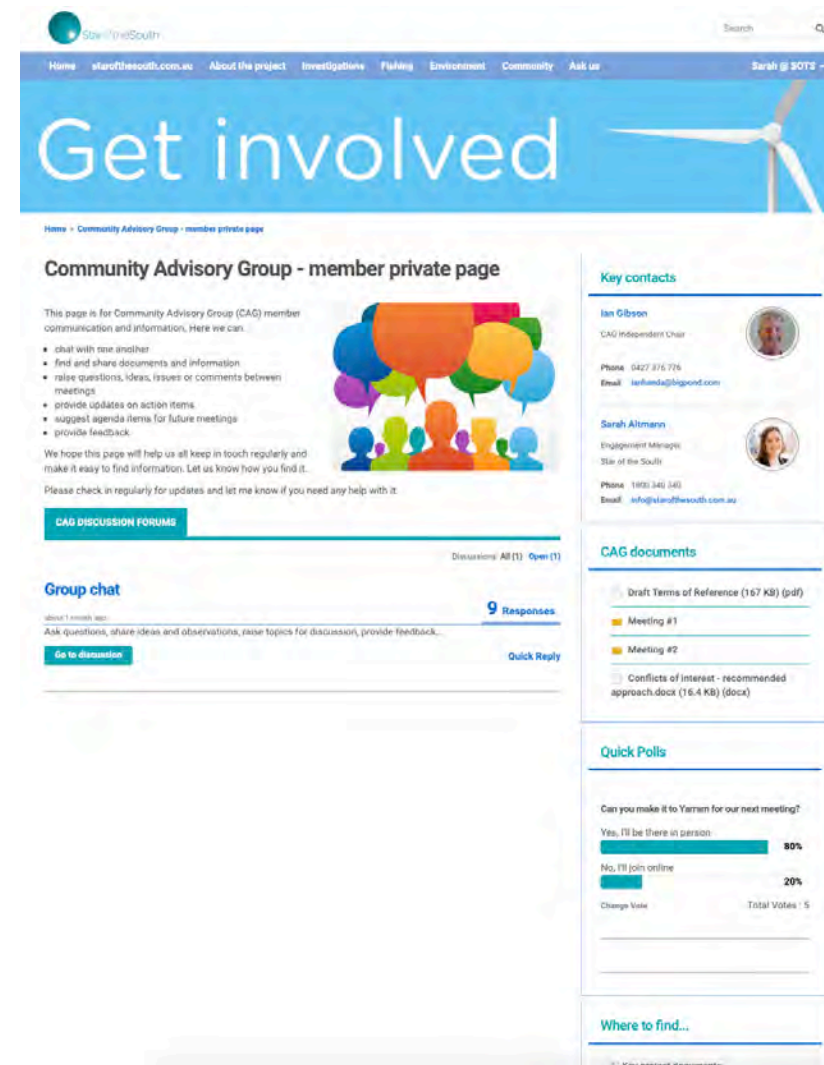
Yes, absolutely. We have lots of flora, fauna and marine studies underway and it would be great to spend some time on this - including a focus on the bird studies. We'll probably touch on it briefly this week, then get into more detail in the next meeting or two. Thanks for the suggestion Jack.

Reply 👍 1 🗨️

Jack Winterbottom, about 12 hours ago Alert moderator

Nice website Sarah. The Complaints Procedure link isn't working! (Just looking!)

Reply Do you agree? 👍 1 🗨️ Hide reply (1) ▶



Star of the South

Home starofthesouth.com.au About the project Investigations Fishing Environment Community Ask us Sarah @ SOTS

# Get involved

Home > Community Advisory Group > member private page

## Community Advisory Group - member private page

This page is for Community Advisory Group (CAG) member communication and information. Here we can:

- chat with one another
- find and share documents and information
- raise questions, ideas, issues or comments between meetings
- provide updates on action items
- suggest agenda items for future meetings
- provide feedback

We hope this page will help us all keep in touch regularly and make it easy to find information. Let us know how you find it.

Please check in regularly for updates and let me know if you need any help with it.

**CAG DISCUSSION FORUMS**

Discussions: All (1) Open (1)

### Group chat

about 1 month ago

Ask questions, share ideas and observations, raise topics for discussion, provide feedback.

[Go to discussion](#) 9 Responses Quick Reply

#### Key contacts

**Ian Gibson**  
CAG Independent Chair  
Phone: 0427 876 776  
Email: ian@ian@bigpond.com

**Sarah Allmann**  
Engagement Manager  
Star of the South  
Phone: 1800 340 340  
Email: sarah@starofthesouth.com.au

#### CAG documents

- Draft Terms of Reference (167 KB) (pdf)
- Meeting #1
- Meeting #2
- Conflicts of interest - recommended approach.docx (16.4 KB) (docx)

#### Quick Polls

Can you make it to Yarram for our next meeting?

Yes, I'll be there in person: 80%

No, I'll join online: 20%

Change Vote Total Votes: 5

#### Where to find...

7. Key contact documents:

Let's keep in touch and share updates between meetings

## 3. Terms of Reference

## 4. What's happening on the project

# Current activities and latest news

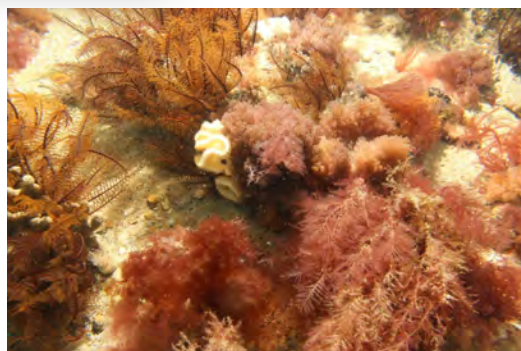
- Re-opening the Gippsland office
- New [project website](#)
- Site investigations continuing at sea and on land
- Updated safety notice for mariners – offshore monitoring equipment
- Assessment of transmission corridor options
- Planning and assessment process progressing with a Technical Reference Group meeting for the first time in December
- Victorian budget – funding to prepare for innovative and transformational renewable energy and hydrogen projects, such as offshore wind
- [ICN Gateway](#) accepting expressions of interest from businesses interested in staying informed and future opportunities on the project



Reg no	Reference name	Position
<b>Flowing wind and wave monitors (1 licensed, 1 floating)</b>		
1	LGAR buoy 30719.1	-48.9123 147.0215
2	LGAR buoy 30719.2	-48.4548 147.0215
3	Wave buoy 30719.1	-48.4703 148.5619
<b>Underwater wave and current monitors (1 licensed, 1 floating)</b>		
4	Wave AMAC	-48.4727 148.5533
5	Wave AMAC	-48.4161 148.4636
<b>Underwater current measurement moorings (3 licensed, 3 floating)</b>		
6	SW Corner	-48.9214 147.461099
7	NE Corner	-48.4239 147.0188
8	Offshore 3	-48.9123 147.0178
9	Offshore 1	-48.9163 147.0424
10	Tracking SE	-48.9123 148.9107
11	Tracking NE	-48.9143 148.9432
12	Tracking NW	-48.9179 148.9171
13	Tracking SW	-48.9127 148.9147
<b>Underwater White Shark products (1 licensed, 10 floating buoys)</b>		
14	WS1 float 1	-48.01 148.01
15	WS1 NE 1	-48.04 147.23
16	WS1 NE 2	-48.39 148.93
17	WS1 NE 3	-48.63 147.27
18	WS1 NE 4	-48.68 148.93
19	SC19 WS1.1	-48.68 148.93
20	SC19 WS1.2	-48.78 148.92
21	SC19 WS1.3	-48.68 148.93
22	SC19 WS1.4	-48.63 147.04
23	SC19 WS1.5	-48.74 147.03
24	SC19 WS1.6	-48.74 148.81
25	SC19 WS1.7	-48.62 148.81
26	SC19 WS1.8	-48.79 148.93
27	SC19 WS1.9	-48.68 148.75
28	SC19 WS1.10	-48.69 147.01
29	SC19 WS1.11	-48.71 147.02
30	SC19 WS1.12	-48.63 147.02
31	SC19 WS1.13	-48.70 147.02
32	SC19 WS1.14	-48.62 148.71
33	SC19 WS1.15	-48.68 148.93

Our current focus is on investigating and understanding local conditions

# Some of what we're seeing



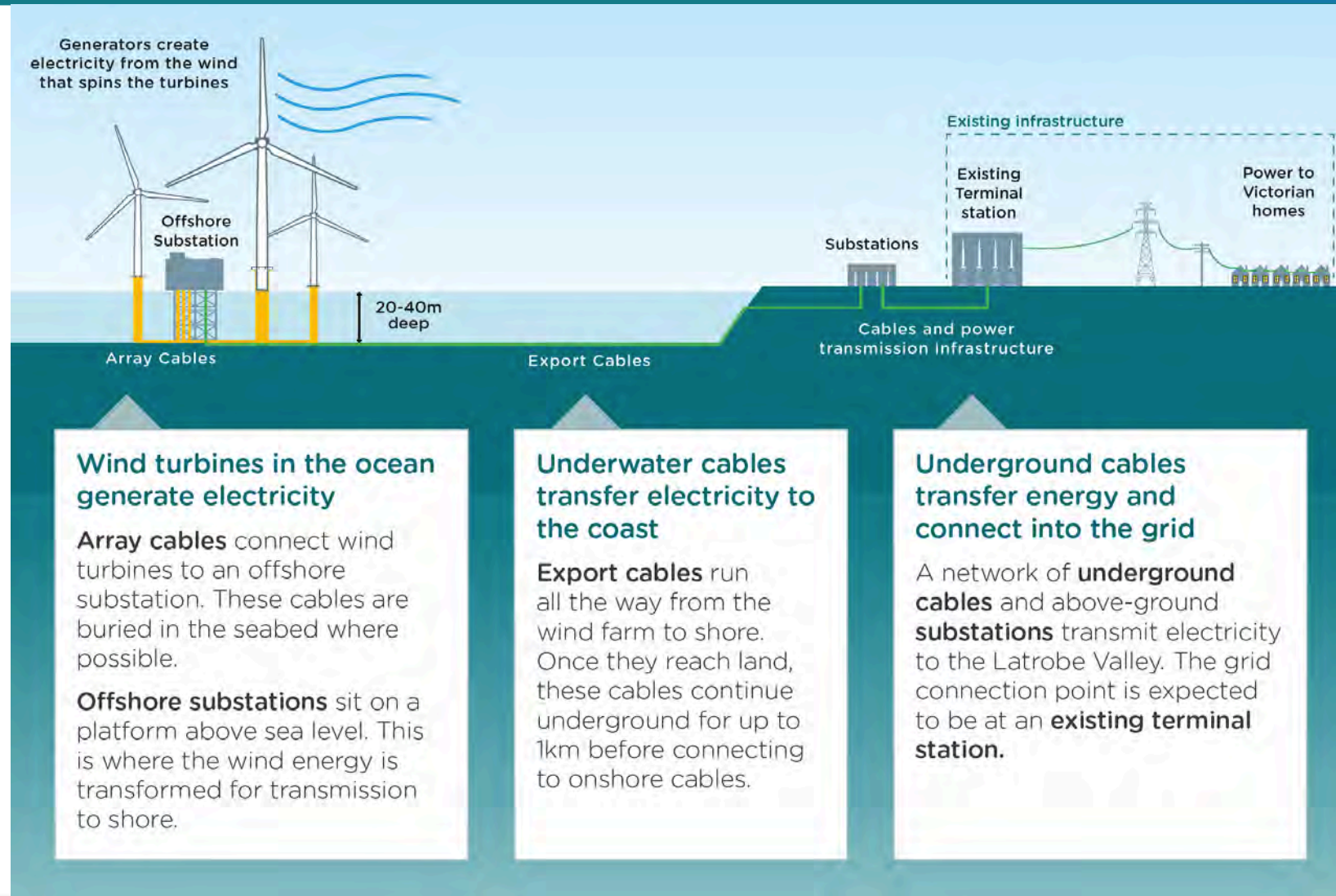
Our environmental studies will continue across 2021, collecting baseline data across different seasons



Break

## 4. Focus on transmission

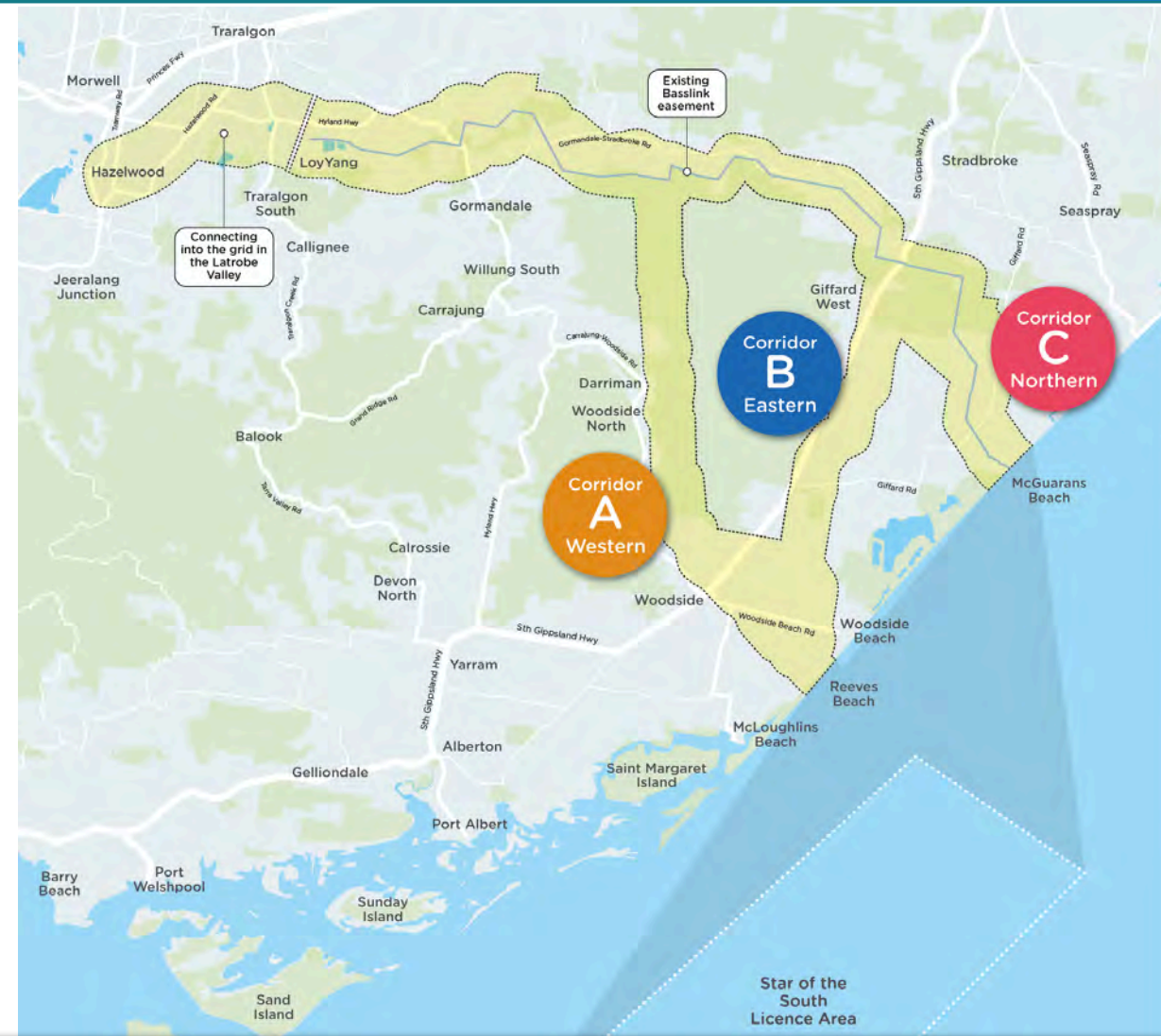
# Transmission system



A transmission system is needed to connect energy generated by offshore turbines to the grid in the Latrobe Valley

# Identifying route options

- An initial study was completed in 2019 to identify possible route options, constraints and considerations
- Constraints
  - Areas of environmental significance (e.g. RAMSAR sites, National Parks)
  - Waterways
  - Topography – hilly ranges
  - Townships
  - Existing infrastructure
  - Areas of cultural significance
- Opportunities
  - Potential to co-locate with existing infrastructure (roads, powerlines)
- Commitment to using underground cables, unless it's not technically feasible or where overhead lines would have lower impacts
- Three possible options for underground cables were identified




A commitment to use underground cables narrowed possible options down to three

# What does trenching look like?



Building a high voltage transmission system is a big undertaking

# Three possible route options

Corridor A - Western	Corridor B - Eastern	Corridor C - Northern
 A map showing the proposed route for Corridor A in orange. The route starts offshore, comes ashore at Reeves Beach, then travels east through Woodside, Giffard West, and Stradbroke.	 A map showing the proposed route for Corridor B in blue. The route starts offshore, comes ashore at Reeves Beach, then travels east through Woodside, Giffard West, and Stradbroke.	 A map showing the proposed route for Corridor C in red. The route starts offshore, comes ashore at McGaurans Beach, then travels west through Giffard West, Stradbroke West, and Hiamdale.
<p><i>Reeves Beach, Woodside, Old Rosedale Road, Hiamdale, Latrobe Valley</i></p> <ul style="list-style-type: none"><li>• Estimated transmission line length - 65km onshore and 20km offshore</li><li>• Cables come to shore around Reeves Beach</li><li>• Mostly agricultural land with some State forest and forestry land</li><li>• Follows Old Rosedale Road for around 25km and the existing Basslink alignment for around 25km</li></ul>	<p><i>Reeves Beach, Darriman, Giffard West, Stradbroke West, Hiamdale, Latrobe Valley</i></p> <ul style="list-style-type: none"><li>• Estimated transmission line length - 75km onshore and 20km offshore</li><li>• Cables come to shore around Reeves Beach</li><li>• Passes through mostly agricultural land</li><li>• Follows existing Basslink alignment for around 45km</li></ul>	<p><i>McGaurans Beach, Giffard, Stradbroke West, Hiamdale, Latrobe Valley</i></p> <ul style="list-style-type: none"><li>• Estimated transmission line length - 65km onshore and 40km offshore</li><li>• Cables come to shore around McGaurans Beach</li><li>• Passes through mostly agricultural land</li><li>• Follows existing Basslink alignment for around 56km</li></ul>

Each option has pros and cons. All share a common 25km section between Hiamdale and the Latrobe Valley

# Assessing the options and selecting a route

- We're undertaking a Multi Criteria Analysis (MCA) to assist with decision making
- An MCA is a method for evaluating, comparing and weighing up a range of important criteria
- Our MCA will help us understand, consider and balance different project aspects, values and perspectives
- The goal is to identify which route will result in the best outcome overall

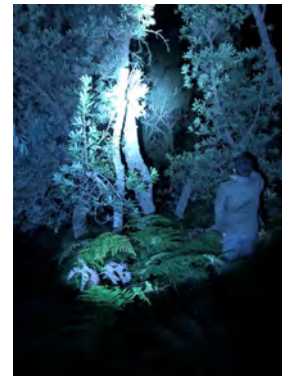
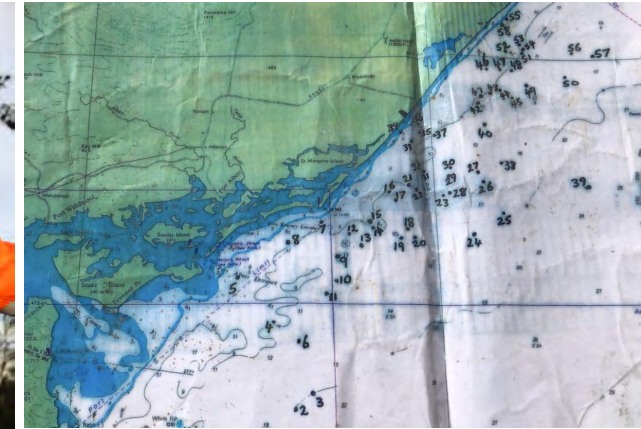


# Inputs to the MCA

Inputs have been collected through desktop studies, field work, technical investigations and consultation across 2020 to build our understanding of each route

What we have learned will feed into the MCA, to support a well informed, evidence based assessment

- Landholder feedback
- Community feedback
- Feedback from government regulators
- Flora and fauna surveys
- Engineering and constructability investigations
- Preliminary Cultural Heritage study and consultation with GLaWAC
- Marine seabed studies
- Soil testing
- Feature survey
- Cost estimates

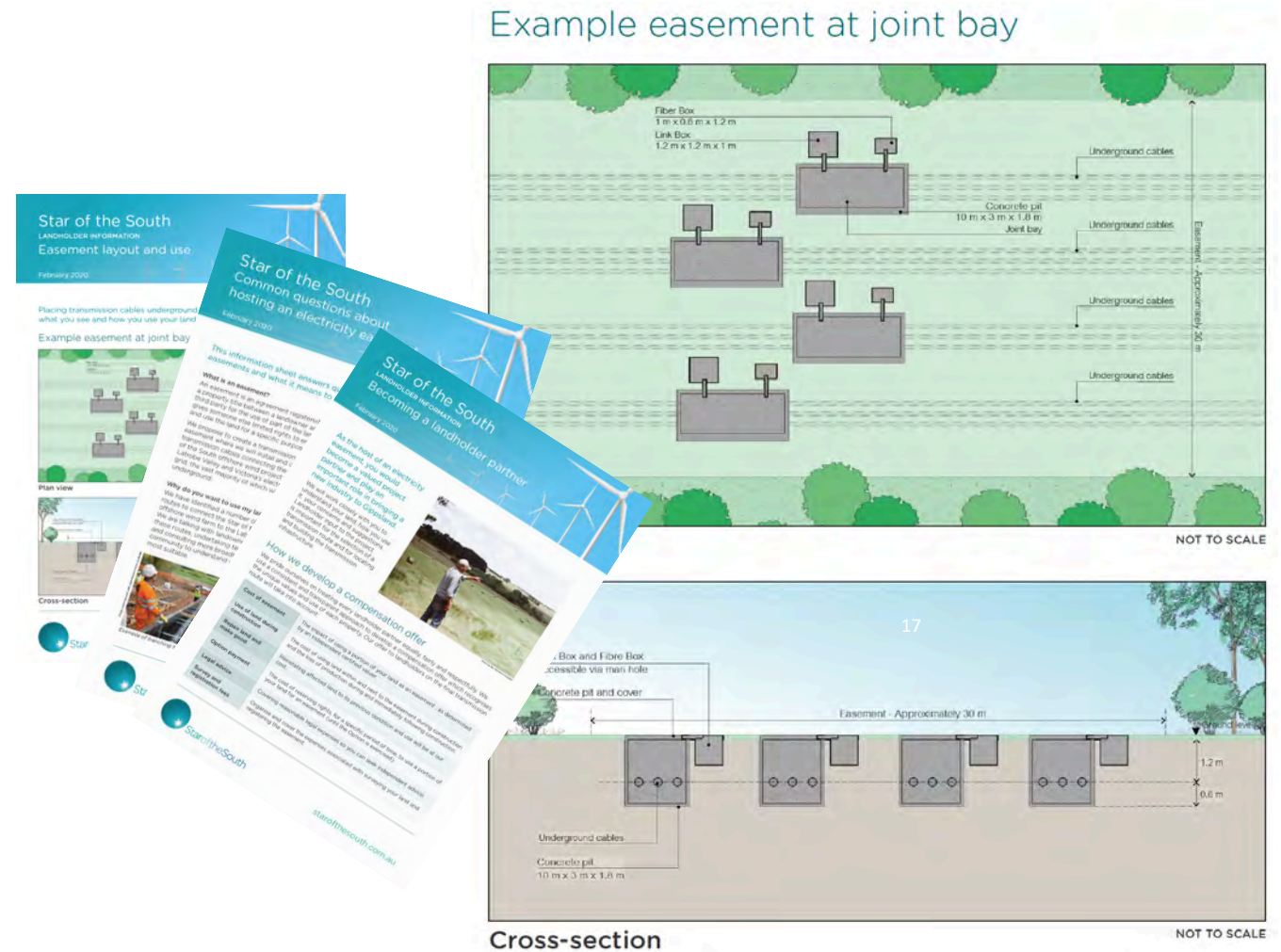


Extensive work - desktop studies, field work, technical investigations and stakeholder feedback – will inform the MCA



# Landholder consultation

- Initial meetings with landholders in March 2020
- Partnership approach
- Land use on the three options is mainly grazing (50%), crown land (21%) or plantations (20%). Other uses include dairy operations, rural residential and horse agistment.
- Top five issues raised by landholders
  - Compensation
  - Property management
  - Re-positioning cable alignment to minimise impacts
  - Preference for underground cable
  - Issues from previous experience dealing with asset owners
- Most landholders have assisted by provided access to their land for flora and fauna surveys



Landholder feedback will play an important part in selecting and refining the design of a transmission route

We asked people to share local knowledge and what's important to consider when deciding which option to progress through planning and design

## We heard

- Support for using underground cables
- Select the corridor with the least environmental impact on land and at sea
- Select the corridor with the least impact to farms and private landholders
- Design the route to avoid native vegetation removal wherever possible
- Support for following Basslink as much as possible
- Consider opportunities to share infrastructure with other projects
- Maintain recreational use of Reeves Beach
- Recognition that practical considerations such as constructability, access, cost and efficiency will be an important part of the decision



Does this feedback align with your understanding of community views?  
Is there anything important missing?



Community members told us to choose a route that reduces impacts to the environment, farms and local communities

# What next?

- Finalise studies and complete the MCA
- Decide which route/s to progress through planning and design
- Communicate the decision to landholders and the community
- Detailed discussions with landholders about an option agreement for the easement and compensation
- Detailed assessment of potential impacts as part of an Environment Impact Statement (EIS) and Environment Effects Statement (EES) across 2021-22
- Further engineering design, with input from landholders and ongoing environmental studies, to refine the route alignment

## 5. Questions and discussion

Has the discussion about transmission raised questions for you?

What else are you hearing about in the community, or wondering about yourself?

## 6. Other items

Thank you