

Community Advisory Group

Meeting #19 – 10 May 2023

We acknowledge the Gunaikurnai people as the traditional custodians of the land and pay respect to their elders past and present

Agenda

1. Welcome
2. Standing items and actions
 - Apologies
 - Minutes and action items
 - Declaration of potential conflicts
3. What's happening on the project
4. What's happening in the community
 - Nicki Jennings
 - All (10 min)
5. Break (10 min)
6. Focus topic: Commercial Fishing Engagement
7. Brief Update: Estimating fish age with Otoliths
8. Other business
 - Other questions or feedback
 - Suggestions for future agenda items
 - Next meeting – Foster/South Gippsland, venue TBC, Wednesday 28 June.
9. Meeting close

What's been happening

- **Aerial Whale Studies** began in Early April
- **Feasibility Licence** has now been submitted
- **Seabed studies** began on 28 April 2023
- **Events:** The Trades Fit Expo, Deadly in Gippsland – First Nations Business Expo, A Renewable Future – Gippsland Tech School, Federation University's Cooperative University Industry Workshop – Energy,
- **Presentations:** Combined Gippsland Essential Industries Group, Energy Australia – Yallourn, Probus Club of Traralgon, Latrobe Valley SCUBA Club, Australian Wind Industry Summit, Norwegian Offshore Wind Capabilities – Australian Offshore Wind Market Webinar
- **Tarra Festival** – Another successful Easter festival that brought many visitors to the area.
- **Heesco Town** – Official opening of the Yarram Water Tower mural



What's coming up

- **Workforce mapping** report
- **Local supply chain** capabilities and opportunities report
- **Events and presentations:** Australian Energy Week 2023, South Gippsland Bass Coast Career Expo, Officer Secondary College, Lavalla Secondary College, Industry Careers Network Dinners – Sale, Moe and Wonthaggi



The feasibility licence application is our top priority over the coming months

What's happening in the community

- **Community updates**
 - Nicki Jennings
- **Everyone**
 - What are you hearing?
 - What are the hot topics in your local area?

Would you like to give an update at the next meeting?



Share what's happening in your community

Commercial fishing engagement



Why and how we're working with fishers

Why

- Understand commercial fishing activity in area
- Build long-term relationships
- Tap in to local knowledge
- Identify fishers who may be affected by the project
- Identify potential impacts and ways these could be avoided or minimised

How

- 1:1 meetings
- Port visits
- Information sessions
- Engagement with industry bodies and fishery managers
- SIV member survey
- Interviews
- Updates via social media, SMS, email, phone calls
- Seafood Directions conference
- Fishing Liaison Officer available locally



We use what we hear to inform the project's development, assessment and future planning for construction and operations

Commercial fishing – who can and who does

COMMONWEALTH MANAGED	VICTORIAN MANAGED
Shark Gillnet Hook and Trap Sector (GHaT)	Ocean General
Commonwealth Trawl Sector (CTS)	Rock Lobster Fishery
Southern Squid Jig (SSJF)	Wrasse (Ocean) Fishery
Eastern Tuna and Billfish Fishery	Purse Seine (Ocean) Fishery
Skipjack Tuna Fishery	Trawl (Inshore) Fishery
Southern Bluefin Tuna Fishery	Octopus Fishery
Small Pelagic Fishery	Scallop (Ocean) Fishery
SESSF Scalefish Hook sector	General (Commercial) Permit
	Giant Crab Fishery
	Bait (General) Fishery
	Sea Urchin Fishery
	Abalone (Central Zone) Fishery



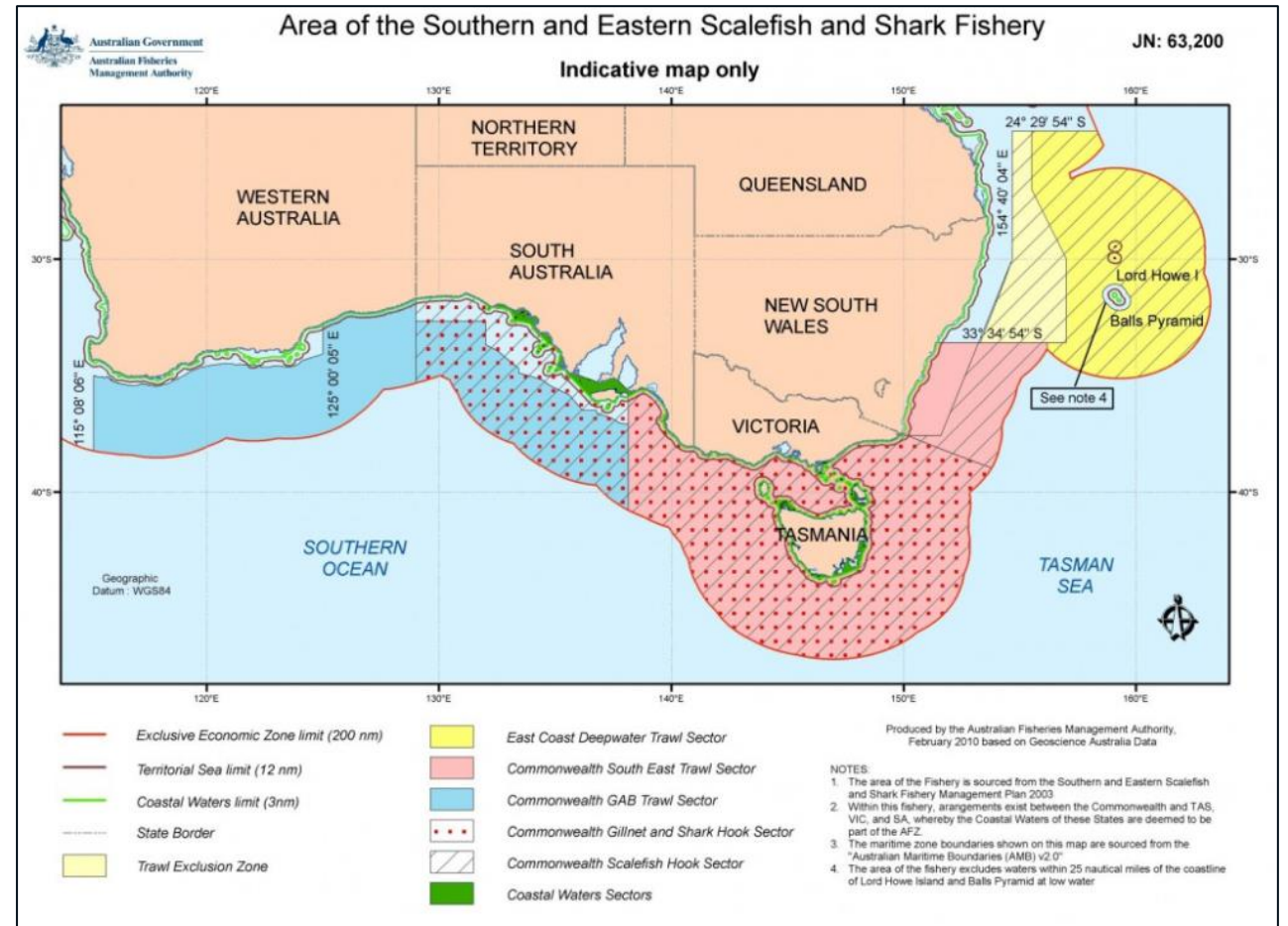
Up to approximately 30 licence holders have fished in the Exploration Licence area since 2000

Commonwealth-managed fisheries

Shark gill net (GHaT)

Danish seine (CTS)

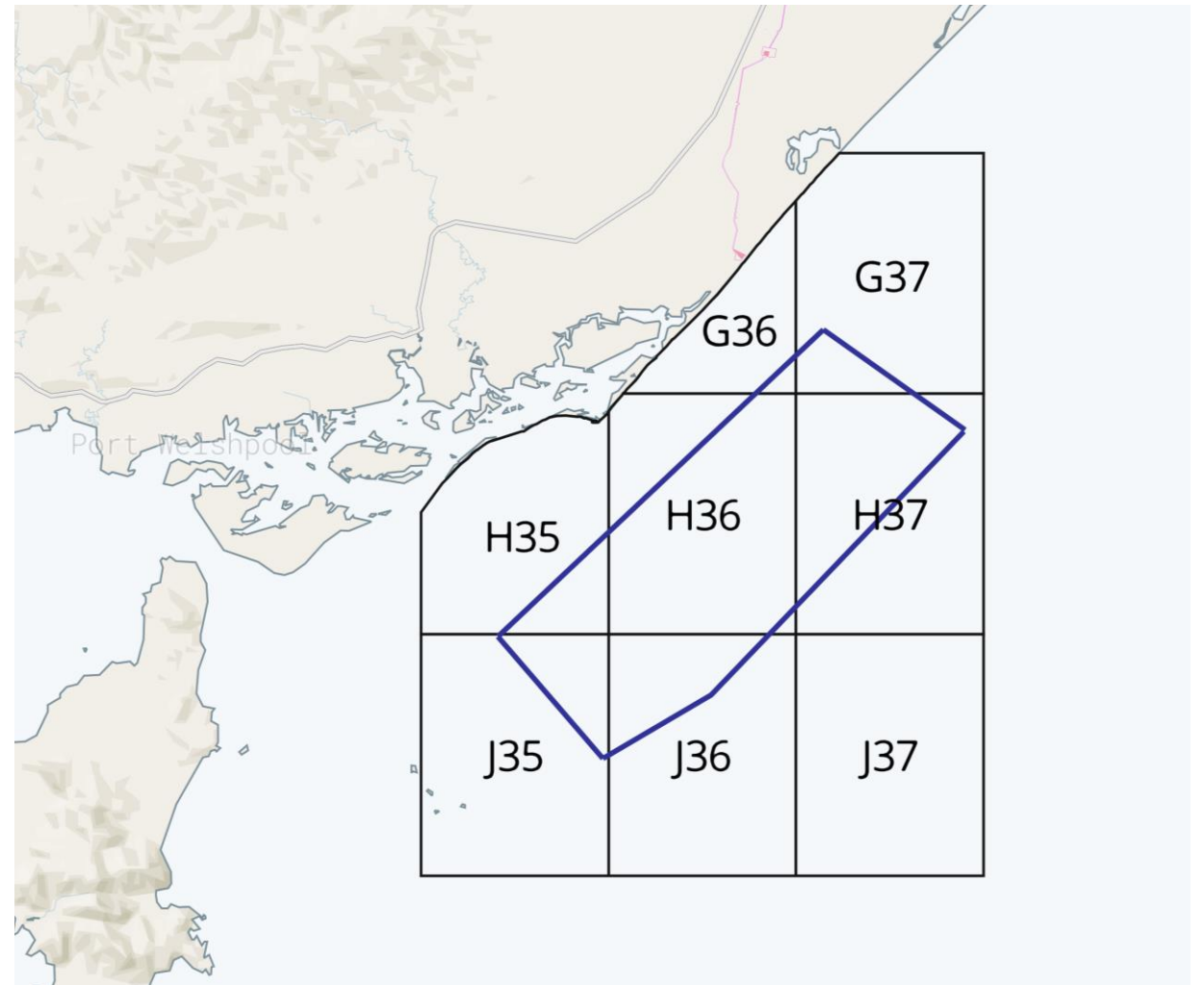
- Engaged with 42 licence holders
- 1:1 meetings with 13 licence holders
- Identified 2 with catch history in the Exploration Licence area



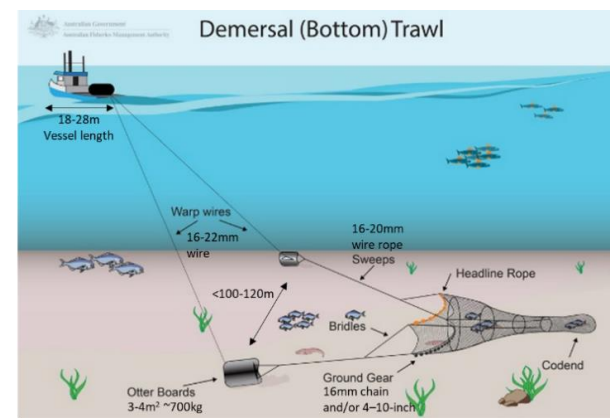
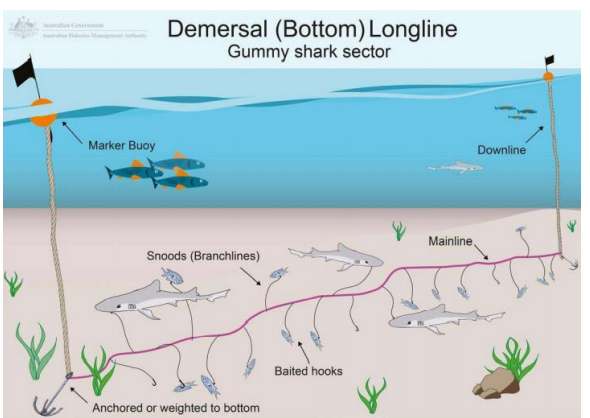
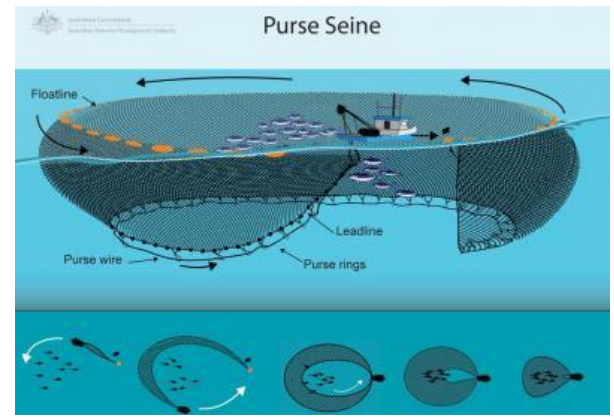
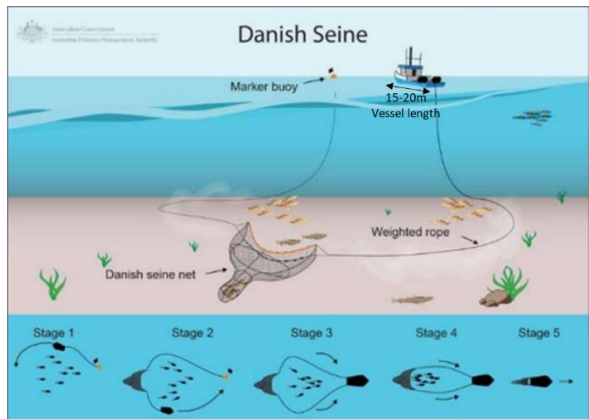
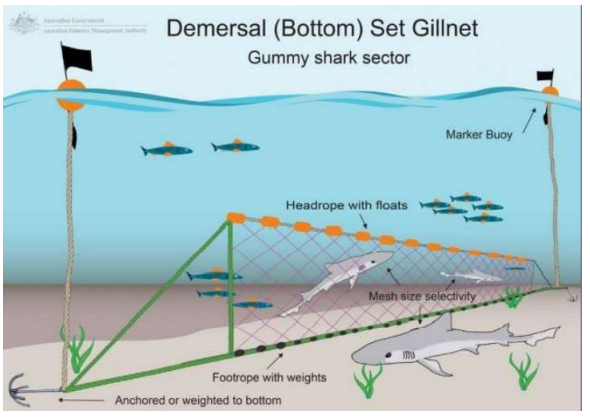
Victorian-managed fisheries

Ocean purse seine	Ocean general
Ocean scallop	Octopus
Inshore trawl	Wrasse
Rock Lobster	

- Engaged with 41 licence holders
- 1:1 meetings with 21 licence holders
- Identified 24 with catch history in the **Exploration Licence area**



Fishing methods



A range of different commercial fishing methods are used

Key target species

- Gummy shark
- Octopus
- Scallops
- Pilchards
- Flathead
- School whiting
- Snapper
- Rock lobster
- Wrasse



Our principles

1

Share the waters

The ideal outcome is for offshore wind and commercial fishing to safely coexist.

2

Look at options

If coexistence isn't possible, Star of the South will work with Concession Holders on a way to acknowledge any impact. For example, helping modify gear so they can keep fishing or alternative work on the project so they can continue earning.

3

Compensation

If other options don't work, Star of the South will compensate Concession Holders with a genuine claim.

Our first principle is to share the waters, so long as it is practical and safe

What fishers can expect at each stage

Pre-construction

- Short-term
- Site investigations such as geotech and geophysical survey
- Minimal disruption



Construction

- Up to 3 years
- Major construction activities and vessel movements
- We'll ask fishers to keep clear of construction zones



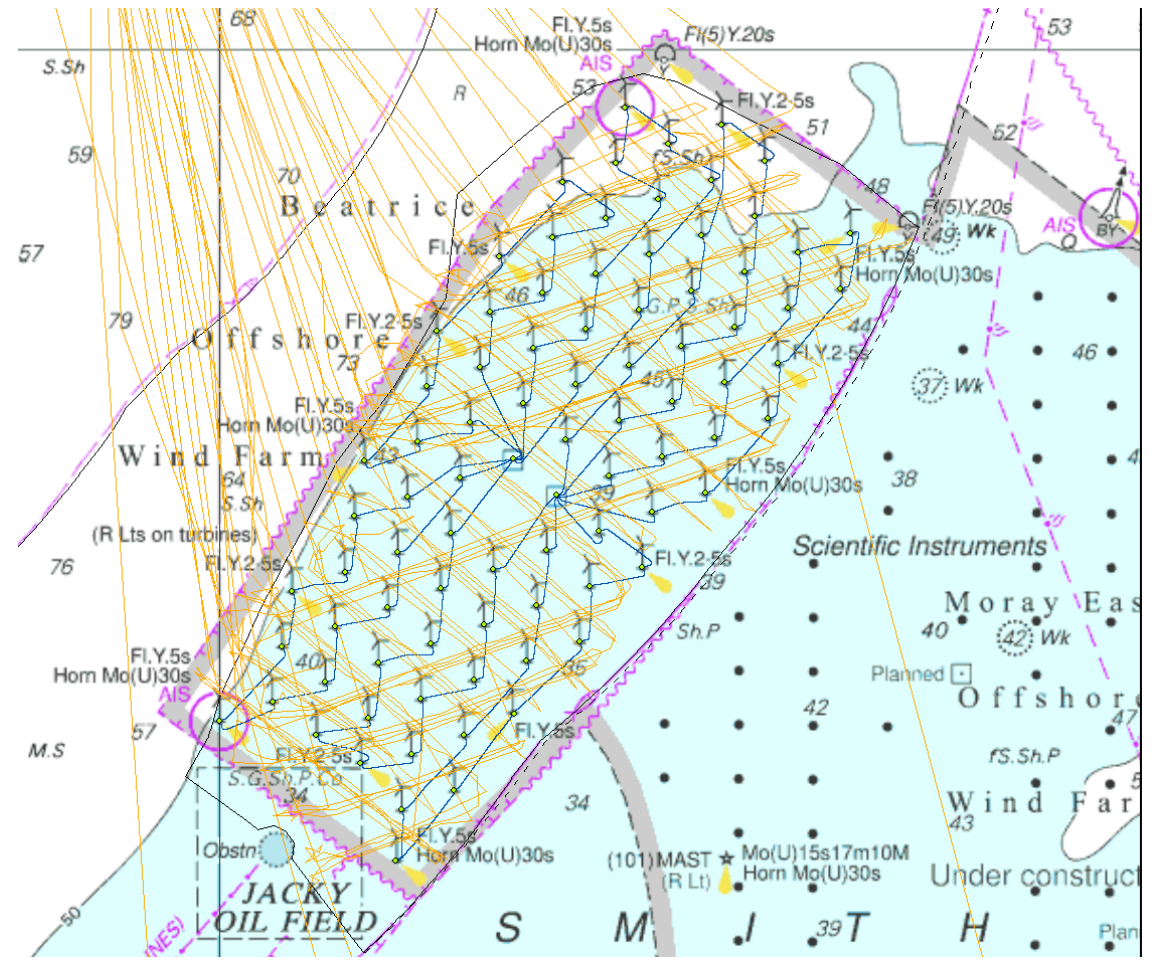
Operations

- Ongoing
- Vessels can navigate through wind farm
- We'll work with fishers to share, look at options or compensate



We'll work with commercial fishers at each stage of the project

Commercial fishing in UK wind farms



Some fishing has continued in UK wind farms

What we're hearing

- Concern about temporary and / or long-term displacement from the area
- Opportunities to work on the project / supplementary income
- Compensation
- Potential ecological benefits and impacts
- Other pressures on the industry (e.g. closures, changes)
- Property damage (e.g. snagged anchors)
- Potential cumulative impacts from multiple wind farms



We look forward to continuing to work with local commercial fishers as project planning continues



Estimating fish age with Otoliths

Estimating fish age with Otoliths



Source: noaateacheratsea.blog/author/megan-woodward/



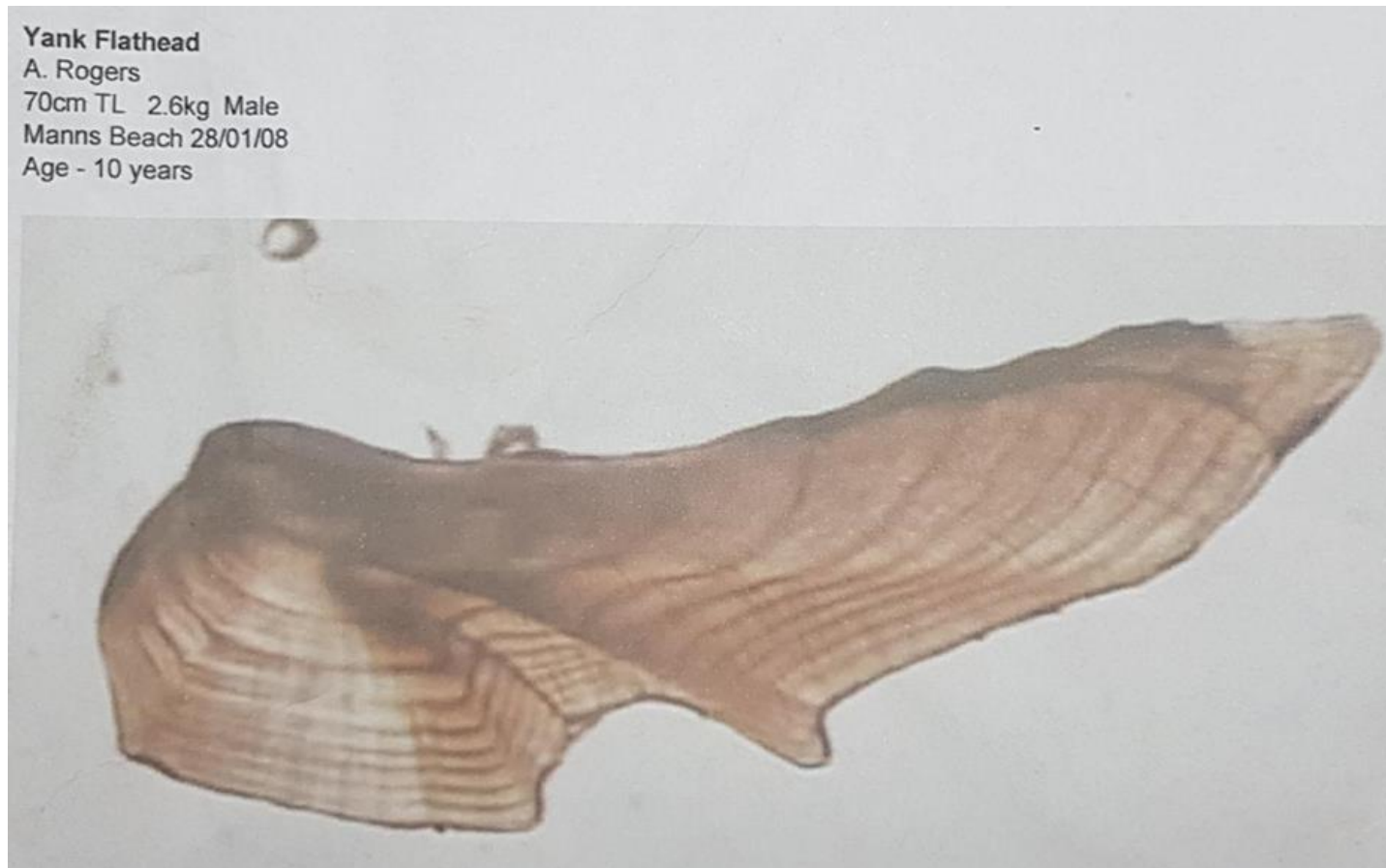
Source: DEECA - [fishers-fishing-for-fish-ear-bones](#)



Source: DEECA - [fishing-for-fish-ear-bones](#)

By analysing Otoliths, we can learn a great deal about the growth, age, origin and movement history of a fish

Estimating fish age with Otoliths



By analysing Otoliths, we can learn a great deal about the growth, age, origin and movement history of a fish



Other business

Other business

- Other questions and feedback?
- Suggestions for future agenda items?
 - List on the CAG Member Teams Page 'files'
 - Email/call Jason
- Next meeting – 28 June 2023

Forward meeting schedule

Date	Location	Topic (tentative, subject to change)
28 June	Foster/South Gippsland	Workforce and supply chain report
16 August	Yarram	Timeline deep-dive – how are we tracking?
5 October	Latrobe Valley	Feasibility Licence outcomes and next steps
15 November	Foster / South Gippsland	Marine environmental assessment update (including birds, marine mammals, seafloor ecology)
December (TBC)	TBC	Xmas breakup

Thank you for your participation