

# Minutes

## Community Advisory Group meeting #16

Chair	Ian Gibson	Time	4:00pm – 5:30pm
Minutes	Jason Pickering	Date	2022-12-01
Location	Woodside Public Hall, Woodside		

## Attendance

Members		Project team		Apologies	
Ian Gibson	Tony Cantwell		Erin Coldham		Nina Barry-Macaulay
Allan Rogers	Glen McColl		Julia Preston		Jack Winterbottom
Glenn Stagg	Deb Lucas		Lachlan McKinnon		Darren McCubbin
Tony Wolfe	Jonathan Pintus		Jason Pickering		Wendy Farmer
Peter Mooney	Travis Dillow		Myles Daniel		Julieanne Peavey
Harry Mitchelson					
Marcus McKenzie					
Jessica Young					
Nicki Jennings					
Jenny Smith					

## Key discussion points

Item	Discussion points
1	<b>Welcome and Acknowledgement of Country</b>
2	<b>Standing items and actions from previous meeting</b> <ul style="list-style-type: none"> <li>– Apologies</li> <li>– Endorsement of minutes from CAG meeting #15</li> <li>– Declaration of potential conflicts of interest</li> <li>– Introduction of new member in the Foster area – Anne Roussac-Hoyne</li> </ul>
3	<b>What’s happening on the project</b> <ul style="list-style-type: none"> <li>– <a href="#">Refer to presentation for key updates.</a></li> <li>– Questions and comments from the group:</li> </ul>



Item	Discussion points
	<ul style="list-style-type: none"><li>- Allan offered feedback on recent community information session venue layout and suggested all project team members move to the front of the venue when answering questions during presentations.</li><li>- Glenn asked for an update on port selection. Erin advised that we're continuing to work with a range of ports that may be suitable to support construction and operations activities, including commercial ports in Corner Inlet. We may use multiple ports during construction. Water depth is a critical consideration regarding selection.</li><li>- Nicki commented that dredging within Corner Inlet is undesirable and wouldn't support using Barry Beach or Port Anthony if dredging were required. Star of the South confirmed no dredging is proposed for Star of the South.</li><li>- Tony W commented other projects will also look to use updated port facilities.</li><li>- Peter commented that some Hastings community members have raised concerns about the development of their local facility following the Victorian Government's announcement that they are investigating the development of Hastings to support an offshore wind industry in Victoria.</li><li>- Jonathan asked about the distance between ports and project sites for US offshore wind sister sites. <a href="#">Question taken on notice - see end of minutes for response.</a></li><li>- Tony W commented that it would be possible to float components in from interstate ports.</li><li>- Peter raised concerns about the government proposal for a single transmission line connecting multiple offshore wind projects to the grid, due to a lack of redundancy in the event of an outage.</li><li>- Glen asked if Star of the South has had discussions with government about the SEC announcement and what it means for the project. Erin advised that this was an election commitment made shortly before the government entered caretaker mode and so this has not been discussed directly with government as yet.</li></ul>
4	<p><b>What's happening in the community</b></p> <ul style="list-style-type: none"><li>- Harry Mitchelson<ul style="list-style-type: none"><li>- Harry shared that many commercial fishers are feeling increased concern with the announcement of new projects in close proximity to Lakes Entrance and key commercial fishing areas.</li><li>- Multiple projects could affect fishing across a larger area and impact on fishing grounds used by the Lakes Entrance fishers.</li><li>- He stated that turbines would need to be 1.5 miles (2.4 km) apart to allow Danish seine net fishing to continue.</li><li>- Jenny asked how many commercial boats at Lakes Entrance? Harry advised approximately 30.</li><li>- Jonathan asked is there any compensation further along the supply chain (i.e. fish sellers, fishmongers). Lachlan advised that the focus is on commercial fishers who find they can no longer fish in the area due to the wind farm and no downstream suppliers are expected to be materially affected.</li></ul></li></ul>

Item	Discussion points
	<ul style="list-style-type: none"> <li>- Travis Dillow               <ul style="list-style-type: none"> <li>- Travis advised that Woodside Beach resident concerns are still largely based on visual impact, but there are some additional concerns about effect on property values and construction noise. Many of these concerns are now elevated by fear of cumulative effects from multiple projects that being proposed.</li> <li>- Allan asked for confirmation of what is the closest point to the coast and what is the distance. <a href="#">Question taken on notice - see end of minutes for response.</a></li> <li>- Nicki commented that a declared renewable energy zone along the entire Ninety Mile beach could be too much and would saturate communities like Woodside. Erin highlighted the importance of community feedback directly to government as the decision maker for areas where offshore renewables can/can't be developed.</li> </ul> </li> <li>- Jessica Young               <ul style="list-style-type: none"> <li>- Advised that people are still confusing multiple projects with Star of the South.</li> <li>- There is a lack of community understanding about the magnitude of project planning and procurement and that there is an approvals process for each project to go through.</li> <li>- Provided positive feedback about the recent steel event and commented that within the Latrobe Valley there is a huge focus on future employment given the forecast closures in the coal power industry.</li> <li>- Many Latrobe Valley people are not supportive of Hastings being declared as the government preferred port because they want to see jobs retained in Gippsland.</li> </ul> </li> </ul>
5	<p><b>Focus on: Seabed studies</b></p> <ul style="list-style-type: none"> <li>- Julia provided an overview of seabed studies expected to start in early 2023. More information will be shared with the community when timing is confirmed by the contractor responsible for doing the work.</li> <li>- Questions from the group:               <ul style="list-style-type: none"> <li>- Alan asked what happens if you encounter rock during borehole sampling. Myles advised we don't expect to find much rock, and anticipate sandy ground conditions. We know this from the preliminary seabed studies completed in March 2020.</li> <li>- Nicki asked what the preferred substrate is. Myles advised deep sand is ideal.</li> <li>- Allan asked how quickly the results come through when the work is complete. Myles advised there would be a data collation and analysis period which can take a significant amount of time.</li> </ul> </li> </ul>
6	<p><b>Other business</b></p> <ul style="list-style-type: none"> <li>- Jenny asked about crew transport and worker accommodation for construction and operations and suggested vessel types as a specialist topic for a future meeting.</li> <li>- Ian queried interest in the Offshore Wind Jobs Guide. Group agreed this has been well received.</li> <li>- Nicki asked who owns the finished documents prepared by consultants on behalf of Star of the South. Erin advised these are owned by Star of the South.</li> <li>- Tony W offered feedback that it might be an advantage to have a one-page project timeline document at each community event to easily show how the project is tracking.</li> </ul>

Item	Discussion points

## Actions – new

No.	Action	Owner	Due
1	Provide information on the distance from the ports Erin visited in the US to the project site.	Erin Coldham / Jason Pickering	08/01/23
2	Provide confirmation of closest point between Star of the South project area and the coast, including the distance.	Jason Pickering	08/01/23
3	Add to future agenda items list: Vessels required for crew transport and accommodation	Jason Pickering	08/01/23

## Next meeting

Date	Time	Place
Wednesday 8 February	4 - 6 pm	RW May Pavilion, Yarram Recreation Reserve

## Questions taken on notice

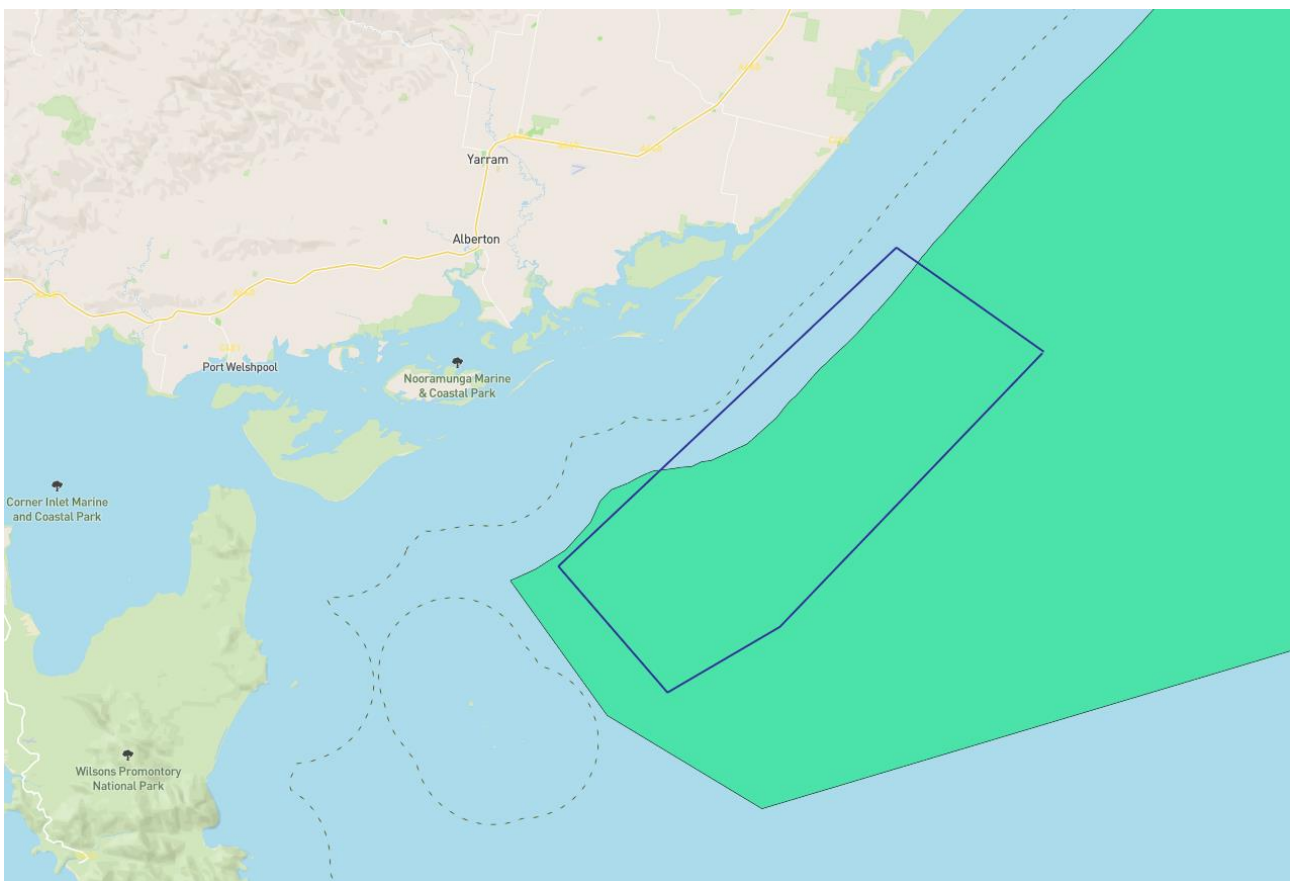
### 1. Distance from ports to project site recently visited by Erin while in the USA.

Erin recently visited the Vineyard Wind 1 project in the US. Vineyard Wind is the first utility-scale offshore wind energy project in the US, located off the coast of Massachusetts. Distances (direct) to the ports relevant to this project are:

- New Bedford (Construction port) - approximately 78 km
- Vineyard Haven Harbour (Operations and Maintenance port) - approximately 57 km
  - Find more about this project at [www.vineyardwind.com](http://www.vineyardwind.com)

### 2. Closest point to the coast from the Star of the South licence area

The Star of the South's current Exploration Licence area is shown as a blue rectangle on the below map. The closest point from this area to the Victorian coast is approximately 6.5 km to a sand island near to the Mcloughlins Entrance. The Australian Government has now declared an area for offshore renewables (in which they will accept licence applications) which starts 10 km from the coast – as shown in green on the below map. This means that Star of the South would also need to be at least 10 km from the coast.



### Map legend

-  Star of the South Exploration Licence area
-  Offshore Electricity Infrastructure Act - Declared area