

Community Advisory Group

Meeting #13 – 23 June 2022

We acknowledge the Traditional Owners of the lands on which we all meet today and pay our respect to their elders past, present and future.

We recognise the Gunaikurnai people as Traditional Owners of the area in which the Star of the South would be located.

Agenda

1. Welcome
2. Standing items and actions from previous meeting
 - Apologies
 - Minutes
 - Declaration of potential conflicts
3. What's happening on the project?
4. What's happening in the community
 - Wendy Farmer
 - Mary-Lou Dixon
5. Focus topic: Ports
6. Update on Marine Ecology Survey Program
7. Other business
 - Questions, feedback, suggestions
 - Next meeting

What's been happening

- **New CEO** appointed - Charles Rattray
- **Cbus Super** acquires 10% interest
- **Pop up info stall** at Sustainability Living Expo in Newborough
- **Presentation to** Woodside Landcare Group
- Talking offshore wind at **industry events** – CEDA, IPA, Energy Week
- **Geotechnical investigations** continuing
- **Victorian Government seeking feedback by 30 June** on their Offshore Wind Policy Directions Paper



We've had some exciting announcements since our last meeting

What's coming up

- **Career fairs** at Morwell, Foster, Sale and Warragul
- **Community presentations and events** including Woodside vs Yarram footy match, Rotary Club Morwell, Lighter Footprints, Gippsland Tech School's Science Week event
- **Industry events** including CEC Clean Energy Summit and Gippsland New Energy Conference
- **Onshore geotechnical investigations** continuing
- Award of **offshore geotechnical investigations** contract and consultation with marine users
- **Recruitment** for our new Community Liaison Officer and Fed Cadet underway
- **Project update presentations** around Gippsland planned for late Aug/September




Star of the South

Working in offshore wind



New energy jobs for Gippsland

Offshore wind farms are like power stations out at sea. Huge wind turbines are installed in the ocean to catch strong offshore winds and generate clean electricity.

An offshore wind industry in Gippsland would bring new, long-term energy jobs to the region.

Offshore wind is a dynamic, innovative sector with lots of exciting opportunities for people looking to help build our energy future and make a difference.



See how offshore wind farms work – scan the QR code to watch a short video.

Different jobs are needed in each phase of a project's life



Let us know if you hear of local events we could take part in

What's happening in the community

- Wendy Farmer
- Everyone
 - What are you hearing?
 - What are the hot topics in your local area?

Would you like to give an update at the next meeting?



Share what's happening in your community



Focus on Ports

Michael Dillon, Ports Manager

Ports

Key considerations:

- Sufficient water depths
- Proximity to the wind farm site
- Sufficient quay side facilities and availability
- Available hinterland for potential manufacturing, assembly and storage
- Provides regional jobs and investment opportunities



Veja Mate

Ports play an important role in construction and operation of offshore wind projects

Construction

Example turbine and foundation feeder ports



A large pre-assembly port would be needed to store and assemble turbine parts

Construction

Example turbine transport

Blades/Tower combined



Tower (sections)



Nacelle



Blades



Large vessels transport parts to the wind farm site

Construction

Example foundation transport

Monopiles



Transition pieces



These key pieces of the turbine foundation are typically transported separately

Construction

Example offshore installation vessels



Jack-up vessels with long support legs that can be raised or lowered are typically used

O&M and construction management

Example O&M ports and vessels



Crew Transfer
Vessel (CTV)



Service Operation
Vessel (SOV)



Typical O&M Port

Typical vessels used for minor daily corrective and preventive scheduled maintenance

Finding the right port/s

- No Australian ports are set up for offshore wind yet
- We're still in an early planning stage with the ability to adapt.
- Multiple ports likely to be needed
- Some ports may only be suitable for certain uses

Next steps

Description	Approximate timing
Request information	2022
Port Assessment	2023
Port Feasibility Study	2023
Agreements in place with selected port/s	2024
Port/s ready to support construction activities	Mid-2020s <i>(pending approvals)</i>



Update - marine surveys

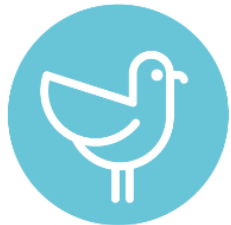
Martina Gassner,
Environment and Approvals Manager (Marine)

Our marine survey program

- 13,000+ hours spent collecting data
- 50,000+ observations were collected
- 6,000+ aerial observations
- 200+ hours of video footage
- 129 fish species recorded
- 37 seabird species recorded
- 10 marine mammal species recorded
- 135 samples of the seabed



Marine mammals



Seabirds and shorebirds



Fish



Benthic Ecology



Coastal Processes

We've undertaken one of the largest ever environmental survey programs in Bass Strait

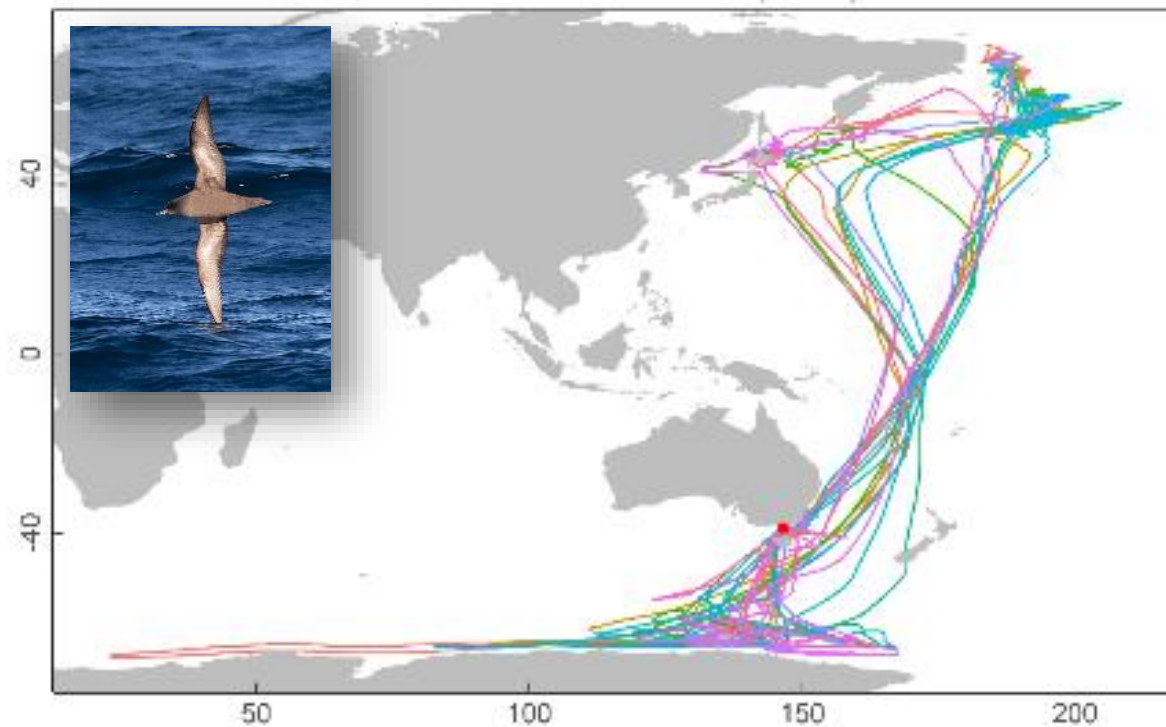
What we've seen – a snapshot



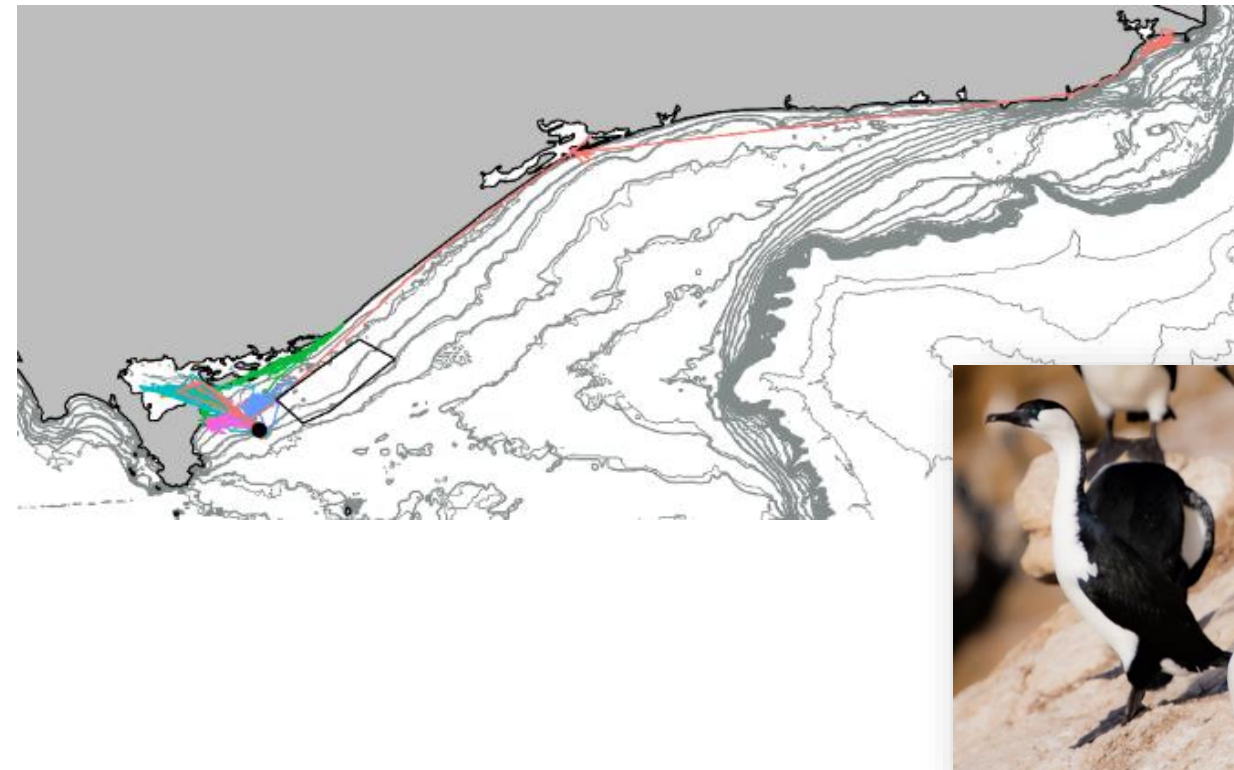
Specialists are collating and analysing two years of data collected using a mix of survey methods

Example tracking maps

Short-tailed Shearwater migration

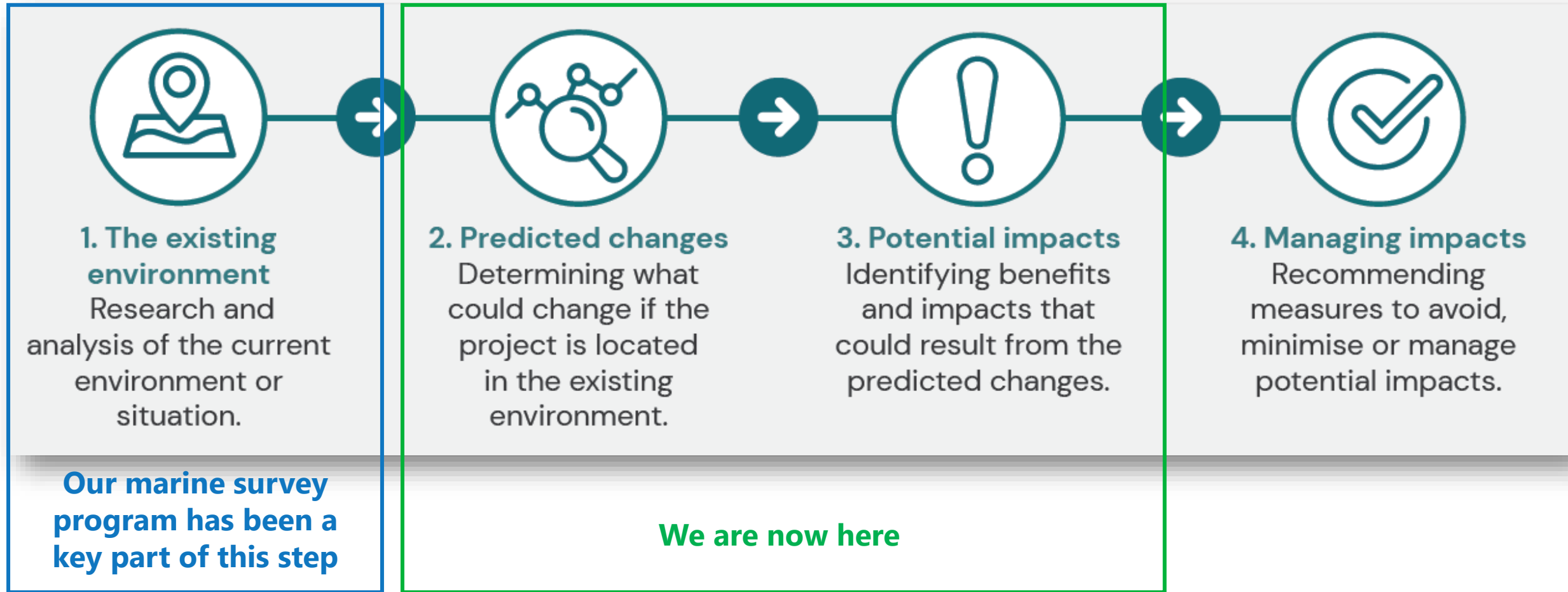


Black-faced cormorant (2021 data)



Over 300 tracking devices deployed to monitor the movements of key species

Next steps



Analysis of data collected is underway and reports will be publicly released when complete, expected in 2023



Other business

Other business

- CAG guests / observers - recommendation
- Other questions and feedback?
- Suggestions for future agenda items?
- Suggestions for future meeting locations?

Forward meeting schedule

Date
Wed 10 Aug (Yarram area)
Thu 6 Oct
Wed 16 Nov
December Xmas break up

Thank you for your participation